



FABRIC & COLOR GUIDE

SUPERIOR QUALITY • LIMITLESS OPTIONS • TRUE CUSTOMIZATION



FABRIC KEY



SUN PROTECTION
W/ SPF 50



ADJUSTABLE
HATS ONLY



AVAILABLE ON
ULTRA-FIT



SUN PROTECTION
W/ SPF 30



STRETCH-FIT
HATS ONLY



ADJUSTABLE OR
STRETCH-FIT

TABLE OF CONTENTS

STANDARD FABRICS

COTTON TWILL	3
COTTON RIPSTOP	5
CAMO.....	6
OXFORD LIGHTWEIGHT COTTON.....	7
POLYFOAM.....	8
POLY TWILL.....	8
SOLID LIGHTWEIGHT COTTON	9
STRETCH TWILL.....	10
TRUCKER MESH	11

PERFORMANCE FABRICS

ACTIVE HEATHER	12
DRIMAX.....	13
NYLON.....	13
PERFORMANCE MESH.....	14
PERFORMANCE WICK	16
PROMAX.....	17
SPORT MESH	18
SPORT PIQUE	18
TECH MESH	19
TRITECH	20
PERFORATED TRITECH	21
UV LITE	23
PERFORATED UV LITE	24

PREMIUM FABRICS

ACRYLIC WOOL	26
HERITAGE FLANNEL	27
ORGANIC CANVAS	27
STRETCH WOOL	28

SPECIALTY FABRICS

BOUCLE TWEED	29
BUFFALO CHECK	29
CORDUROY	30
CORK	30
DENIM	31
DOBBY SLUB	31
FLECK TWEED	31
GLEN PLAID	32
HAWAIIAN	32
HEATHER JERSEY	32
HERRINGBONE	33
MOSSY OAK®	33
NATIVE	33
OXFORD CHAMBRAY	34
SEERSUCKER	34
SUEDE	35
TROPICAL	35
WAXED CANVAS	36

YARNS

ACRYLIC YARN	36
LIGHTWEIGHT YARN	38
COTTON YARN	39
HEATHER YARN	40

COTTON TWILL 1 OF 2



MATERIAL NO: P

100% Cotton

Durable woven fabric with a soft hand feel identified by its diagonal texture of the weave that appears on the face of this popular fabric.

COLOR OPTIONS



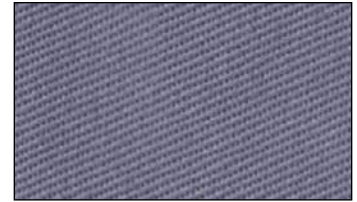
BLACK / 5



CHARCOAL / 363



GREY HEATHER / 974



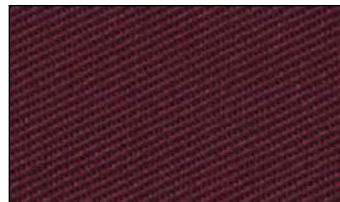
METAL / 103



STEEL / 113



WHITE / 118



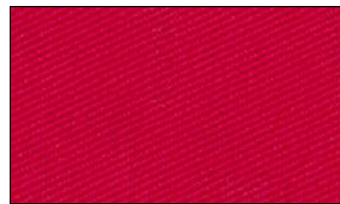
MAROON / 523



CRIMSON / 251



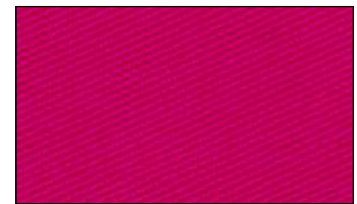
SCARLET / 337



RED / 379



NANTUCKET RED / 1190



FUCHSIA / 407



PINK / 267



PETAL / 442



MANGO / 223



RUST / 430



TEXAS ORANGE / 284



ORANGE / 445



NUGGET / VEGAS / 354



GOLD / 250



MUSTARD / 439



ATHLETIC GOLD / 215



YELLOW / 361



CREAM / 1082

COTTON TWILL 2 OF 2



MATERIAL NO: P

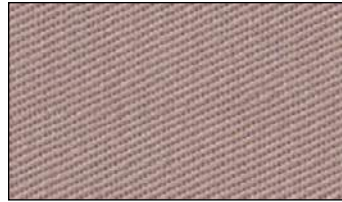
100% Cotton

Durable woven fabric with a soft hand feel identified by its diagonal texture of the weave that appears on the face of this popular fabric.

COLOR OPTIONS



STONE / 1



KHAKI / 9



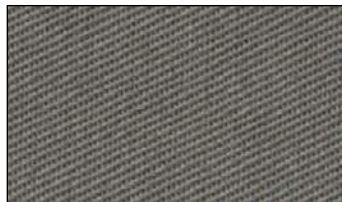
LATTE / 238



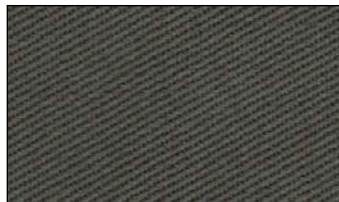
CINNAMON / 433



BROWN / 378



SURPLUS / 3



OLIVE / 419



FOREST / 217



GREEN / 548



AVOCADO / 518



KIWI / 322



LIME / 214



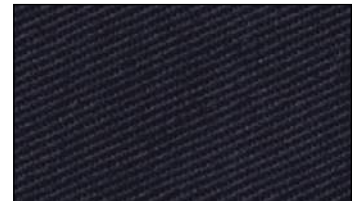
SEAFOAM / 497



TEAL / 1173



NAVY / 204



TWILIGHT / 325



ROYAL / 88



SLATE / 317



ELECTRIC BLUE / 572



AQUA / 286



CAROLINA / 112



FROST / 285



PURPLE / 481



LILAC / 364

COTTON RIPSTOP



MATERIAL NO: CR

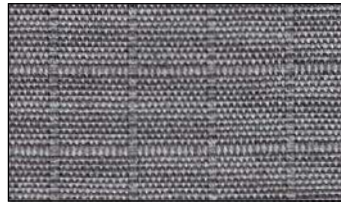
100% Cotton

Breathable, mid-weight ripstop material that is both rugged and refined. A perfect fit for any of your style needs from functional outdoor(s) to fun retro and everything between.

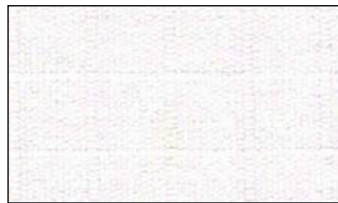
COLOR OPTIONS



BLACK / 002



PEWTER / 80



WHITE / 10



RED / 85



KHAKI / 13



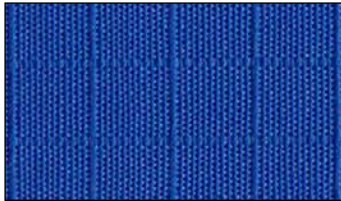
BROWN / 19



OLIVE / 68



NAVY / 16



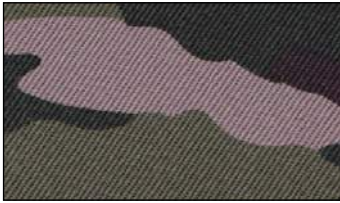
ROYAL / 9

CAMO

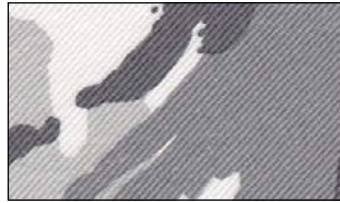
Army, Tiger, Snow and Mossy Oak® Camo will help conceal by blending into its environment or providing a false impression. Digital Camo is a pixelated camouflage, without discernible shapes or features.

COTTON TWILL

MATERIAL NO: P



ARMY / 5H29
100% Cotton



SNOW / 02X001
100% Cotton



TIGER / 058
100% Cotton



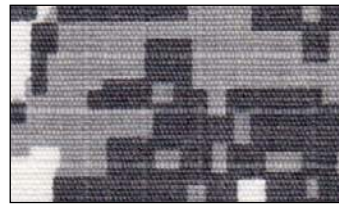
ARMY DIGITAL / 53G006
100% Cotton



BLACK DIGITAL / 53G8
100% Cotton



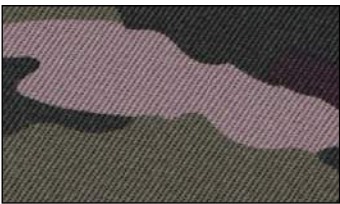
DESERT DIGITAL / 53G16
100% Cotton



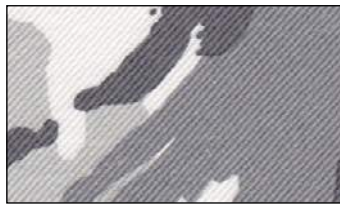
GREY DIGITAL / 53G17
100% Cotton

STRETCH TWILL

MATERIAL NO: ST



ARMY / 5H29
97% Cotton / 3% Spandex



SNOW / 02X001
97% Cotton / 3% Spandex

TRUCKER MESH

MATERIAL NO: M



ARMY / 529
100% Polyester



TIGER / 058
100% Polyester

MOSSY OAK®

MATERIAL NO: MO



BREAK-UP COUNTRY / 815
100% Cotton



SHADOW GRASS BLADES / 816
100% Cotton

OXFORD LIGHTWEIGHT COTTON



MATERIAL NO: LC

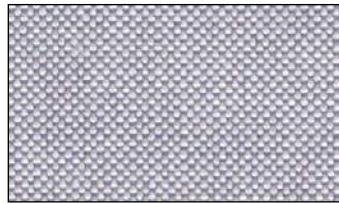
100% Cotton

With SPF 30 sun protection this basketweave fabric is the perfect summer choice. It's woven using colored threads crossed with white giving it a two-toned look when up close and a softer solid-colored look at a distance.

COLOR OPTIONS



BLACK OXFORD / 269



STEEL OXFORD / 268



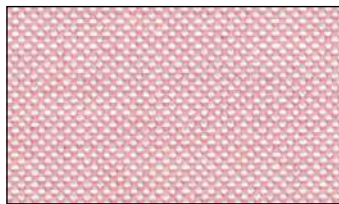
WHITE OXFORD / 266



SCARLET OXFORD / 605



FUCHSIA OXFORD / 741



MANGO OXFORD / 264



LEMON OXFORD / 263



ROYAL OXFORD / 602



CAROLINA OXFORD / 267



LILAC OXFORD / 604

POLY / POLYFOAM



MATERIAL NO: PF

100% Polyester

Smooth knit fabric most commonly used with a foam backing to create a traditional Trucker Hat. This fabric accepts sublimation (white only) and screenprint artwork very well due to its finely knit smooth face.

COLOR OPTIONS



BLACK / 1



CHARCOAL / 164



STEEL / 18



WHITE / 4



CRIMSON / 158



RED / 78



OLIVE / 95



NAVY / 8



ROYAL / 28

POLY TWILL



MATERIAL NO: PT

100% Polyester

Twill weave fabric recognizable by the diagonal texture of the weave that appears on the face of this fabric. Poly Twill will give your sublimated artwork more texture than other sublimation friendly materials.

COLOR OPTIONS



WHITE

SOLID

LIGHTWEIGHT COTTON

1 OF 2



MATERIAL NO: LS

100% Cotton

Basketweave fabric made famous by its use in men's casual button-down shirts. It's a lightweight, durable fabric with SPF 30 sun protection that has a slight texture and is soft to the touch.

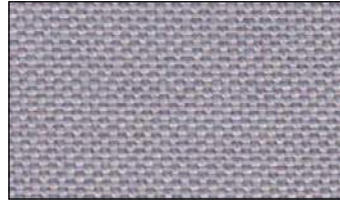
COLOR OPTIONS



BLACK / 04002



CHARCOAL / 09001



STEEL / 09003



WHITE / 01001



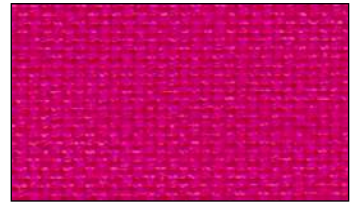
MAROON / 03003



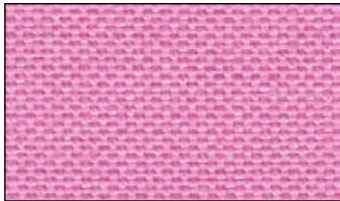
CRIMSON / 03001



SCARLET / 02001



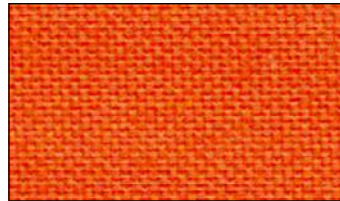
FUCHSIA / 21003



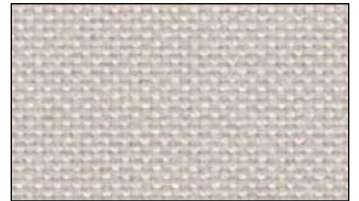
PINK / 21002



TEXAS ORANGE / 08004



ORANGE / 08003



STONE / 22002



KHAKI / 22001



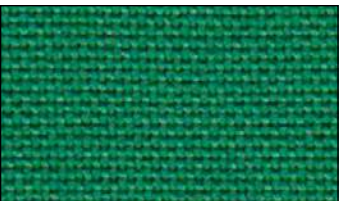
LATTE / 11003



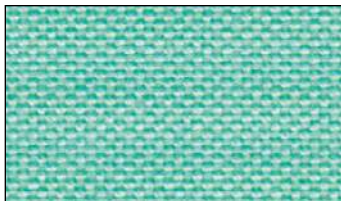
SURPLUS / 09002



FOREST / 06001



GREEN / 06005



SEAFOAM / 06002



TEAL / 05009



NAVY / 07001

SOLID

LIGHTWEIGHT COTTON

2 OF 2

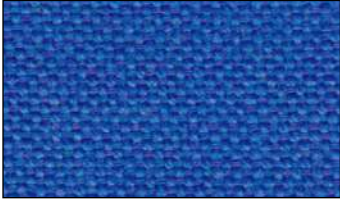


MATERIAL NO: LS

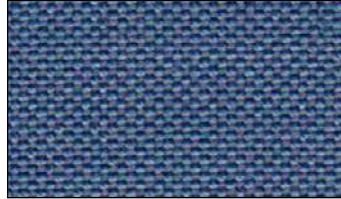
100% Cotton

Basketweave fabric made famous by its use in men's casual button-down shirts. It's a lightweight, durable fabric that has a slight texture and is soft to the touch.

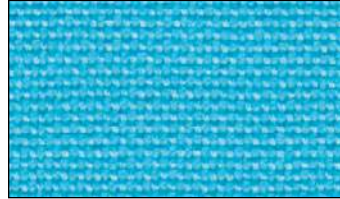
COLOR OPTIONS



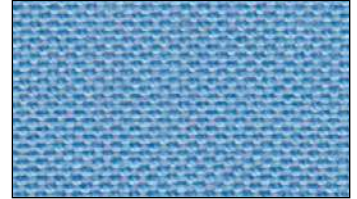
ROYAL / 05005



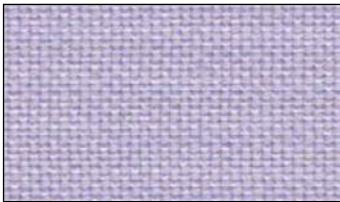
SLATE / 05006



AQUA / 05008



CAROLINA / 05007



LILAC / 15001

STRETCH TWILL

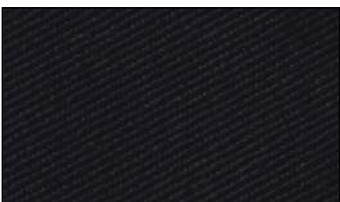


MATERIAL NO: ST

97% Cotton / 3% Spandex

Durable woven fabric, specifically designed to stretch for added comfort, performance, and flexible sizing options.

COLOR OPTIONS



BLACK / 2



STEEL / 51



WHITE / 7



KHAKI / 49



NAVY / 3



ROYAL / 50



ARMY CAMO / 5H29



SNOW CAMO / 02X001

TRUCKER MESH 1 OF 2

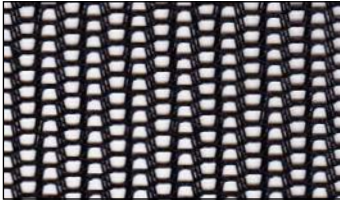


MATERIAL NO: M

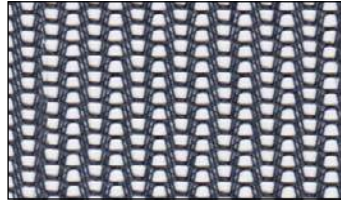
100% Polyester

Open weave mesh with a mildly structured hand feel that breaks in nicely over time or when a wash is added and is the go-to fabric for ultimate breathability.

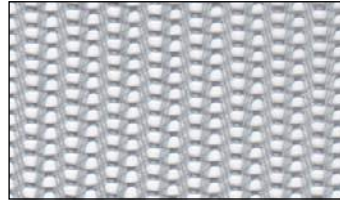
COLOR OPTIONS



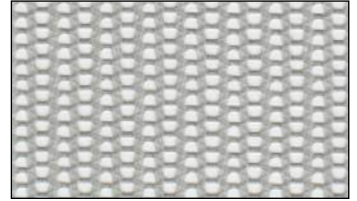
BLACK / 3



CHARCOAL / 39



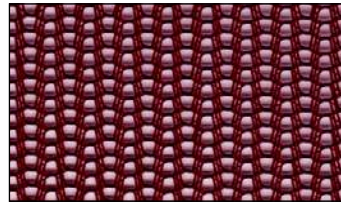
STEEL / 20



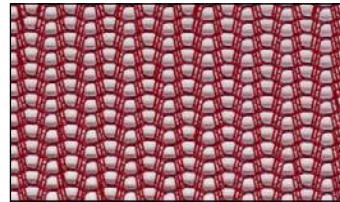
STEEL OXFORD / 1



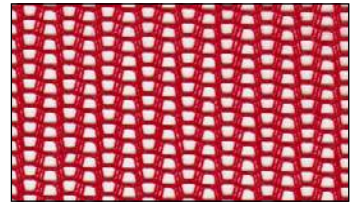
WHITE / 10



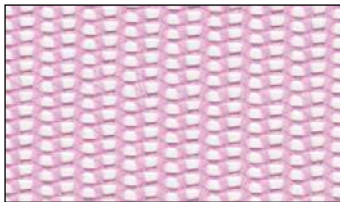
MAROON / 194



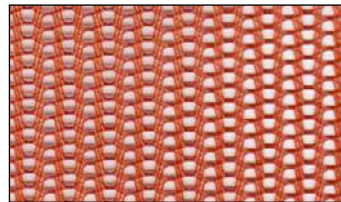
CRIMSON / 51



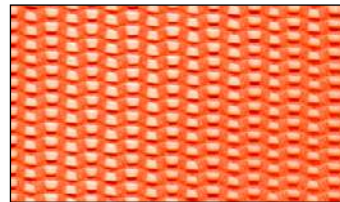
SCARLET / 2



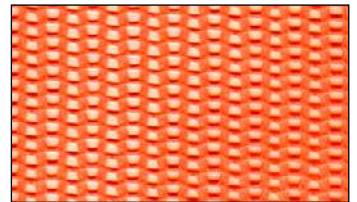
PINK / 46



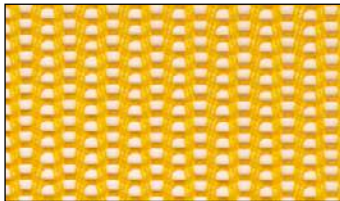
TEXAS ORANGE / 129



ORANGE / 12



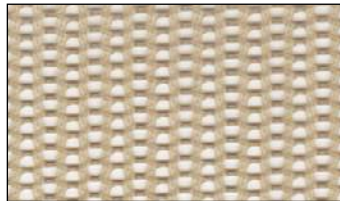
NEON ORANGE / 70



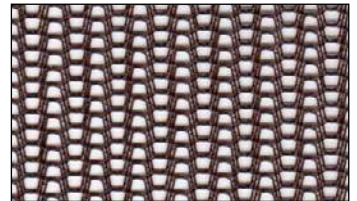
ATHLETIC GOLD / 21



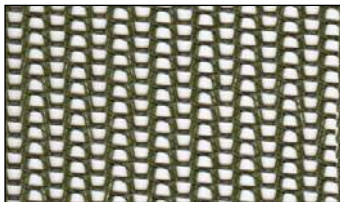
STONE / 25



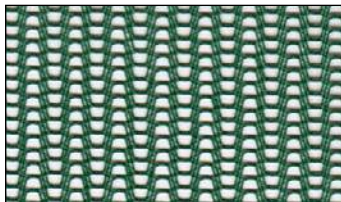
KHAKI / 11



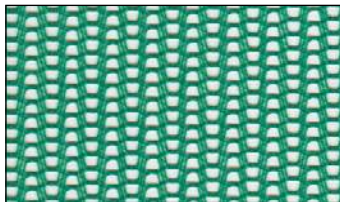
BROWN / 9



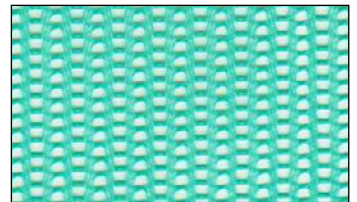
SURPLUS / 41



FOREST / 37



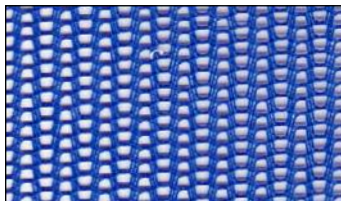
GREEN / 32



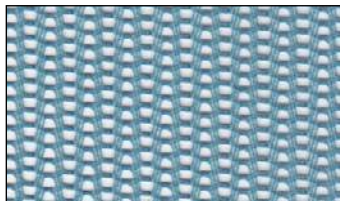
SEAFOAM / 87



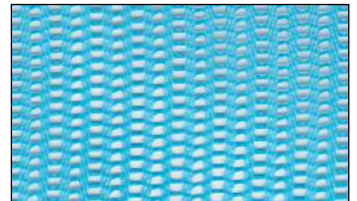
NAVY / 34



ROYAL / 55



SLATE / 35



AQUA / 144

TRUCKER MESH 2 OF 2

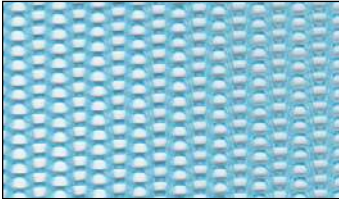


MATERIAL NO: M

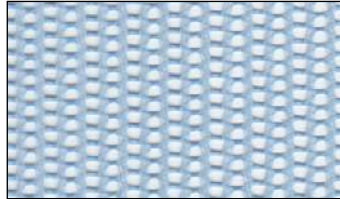
100% Polyester

Open weave mesh with a mildly structured hand feel that breaks in nicely over time or when a wash is added and is the go-to fabric for ultimate breathability.

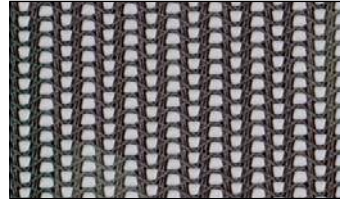
COLOR OPTIONS



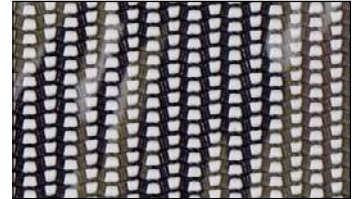
CAROLINA / 13



CAROLINA OXFORD / 44



ARMY CAMO / 529



TIGER CAMO / 058

ACTIVE HEATHER



MATERIAL NO: AH

92% Polyester / 8% Spandex

Spandex jersey knit fabric with added stretch for increased comfort & flexible sizing options. The high contrast heathered mélange look is sure to help you stand out while showing off your team or brand loyalty.

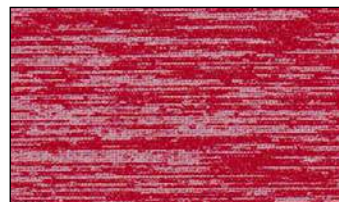
COLOR OPTIONS



BLACK / 04001



CHARCOAL / 09001



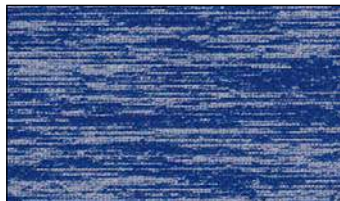
SCARLET / 02001



FOREST / 06001



NAVY / 07001



ROYAL / 05001

DRIMAX



MATERIAL NO: DX

100% Polyester

Lightly textured water-resistant fabric that has been treated to repel water, keeping those who spend time outdoors in inclement weather dry.

COLOR OPTIONS



BLACK / 1117



CHARCOAL / 1119

NYLON 1 OF 2



MATERIAL NO: MF

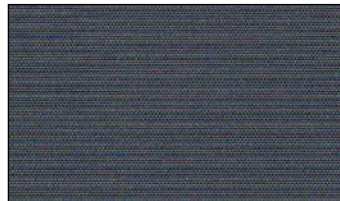
100% Polyester

Fun and carefree lightweight fabric that is both quick-drying and breathable. Great for all-day comfort.

COLOR OPTIONS



BLACK / 13



METAL / 6



STEEL / 3



WHITE / 1



RED / 7



FUCHSIA / 21



PINK / 19



YELLOW / 10



STONE / 20



KHAKI / 4



LIME / 11



SEAFOAM / 39

NYLON 2 OF 2

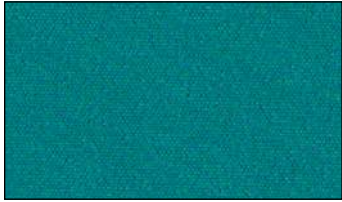
MATERIAL NO: MF

100% Polyester

Fun and carefree lightweight fabric that is both quick-drying and breathable. Great for all-day comfort.



COLOR OPTIONS



TEAL / 38



NAVY / 14



TWILIGHT / 42



ROYAL / 12



ELECTRIC BLUE / 41



CAROLINA / 18

PERFORMANCE MESH 1 OF 2

MATERIAL NO: AM

100% Polyester

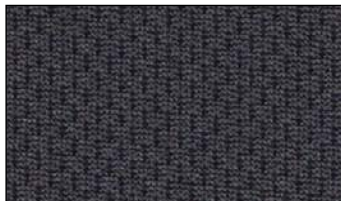
Performance knit fabric features an athletic look with a dimpled mesh face and flat back. The moisture-wicking, breathability, and stretch properties are great for any athletic or leisure activity.



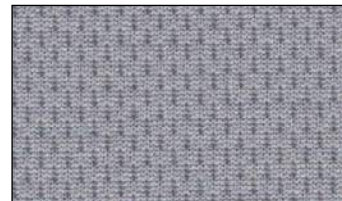
COLOR OPTIONS



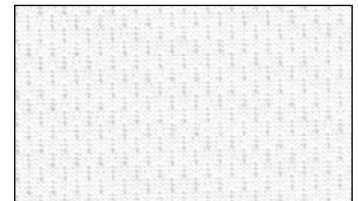
BLACK / 2



CHARCOAL / 38



STEEL / 11



WHITE / 1



MAROON / 24



CRIMSON / 17



RED / 3



PINK / 8

PERFORMANCE MESH

2 OF 2



MATERIAL NO: AM

100% Polyester

Performance knit fabric features an athletic look with a dimpled mesh face and flat back. The moisture-wicking, breathability, and stretch properties are great for any athletic or leisure activity.

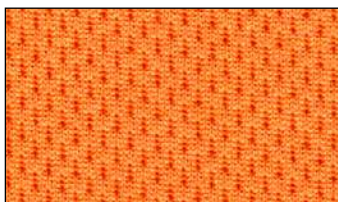
COLOR OPTIONS



TEXAS ORANGE / 32



ORANGE / 45



NEON ORANGE / 197



NUGGET / VEGAS / 94



ATHLETIC GOLD / 26



NEON YELLOW / 219



STONE / 5



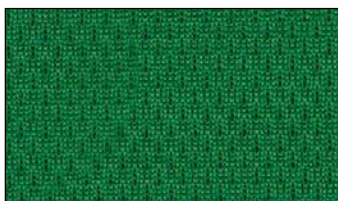
KHAKI / 118



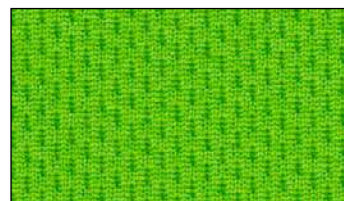
BROWN / 36



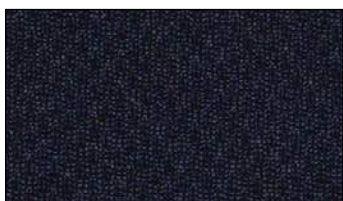
FOREST / 20



GREEN / 50



LIME / 47



NAVY / 6



ROYAL / 4



CAROLINA / 12



PURPLE / 18

PERFORMANCE WICK



MATERIAL NO: PW

96% Polyester / 4% Spandex

High density knit fabric with stretch and moisture management features that add comfort and keep you cool and dry.

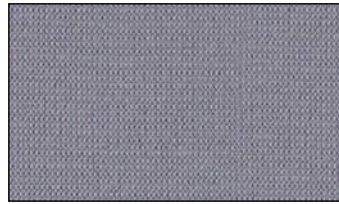
COLOR OPTIONS



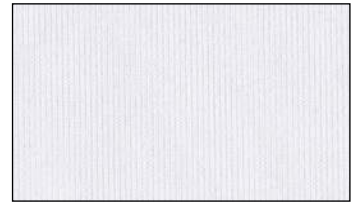
BLACK / 2



CHARCOAL / 8



STEEL / 3



WHITE / 4



MAROON / 12



CRIMSON / 23



SCARLET / 1



ORANGE / 10



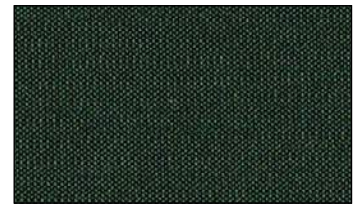
NUGGET / VEGAS / 24



ATHLETIC GOLD / 15



KHAKI / 11



FOREST / 14



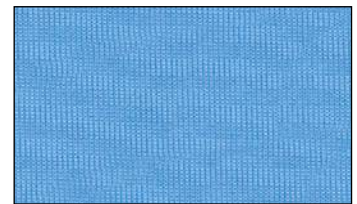
GREEN / 13



NAVY / 6



ROYAL / 5



CAROLINA / 18



PURPLE / 9

PROMAX



MATERIAL NO: PX

100% Polyester

Performance-based knit fabric featuring a modern square dimpled mesh pattern, mechanical stretch, moisture-wicking, and SPF 50 protection, making it an excellent option for any activity.

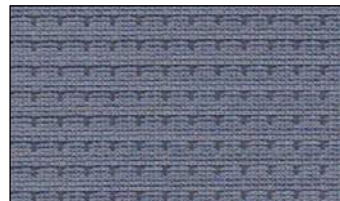
COLOR OPTIONS



BLACK / 04002



CHARCOAL / 09002



METAL / 09005



STEEL / 09004



WHITE / 01002



MAROON / 03002



SCARLET / 02002



RED / 02001



TEXAS ORANGE / 02003



ORANGE / 08002



ATHLETIC GOLD / 12001



STONE / 22002



KHAKI / 13001



SURPLUS / 13002



FOREST / 06002



NAVY / 07005



TWILIGHT / 07002



ROYAL / 05003



SLATE / 05005



CAROLINA / 05004



PURPLE / 15001

SPORT MESH



MATERIAL NO: SM

100% Polyester

Stretch mesh fabric with a uniquely lofted structure that keeps the majority of the material away from the skin, allowing airflow to speed up the moisture-wicking process. A great stylish option for any activity.

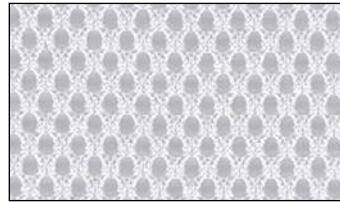
COLOR OPTIONS



BLACK / 2



CHARCOAL / 69



WHITE / 1

SPORT PIQUE

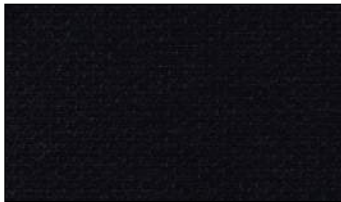


MATERIAL NO: SP

65% Polyester / 30% Viscose / 5% Spandex

Pique knit fabric that is similar to Polo shirt fabric. Our Sport Pique offers a great textured look, soft hand feel, and stretch for added comfort & flexible sizing options.

COLOR OPTIONS



BLACK / 04001



DARK GREY HEATHER /
09001



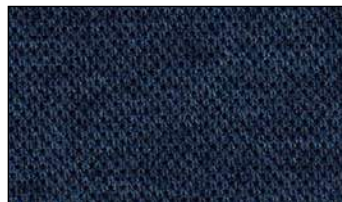
IRON GREY HEATHER /
05001



WHITE / 01001



MAROON HEATHER /
03001



TWILIGHT HEATHER /
07001

TECH MESH

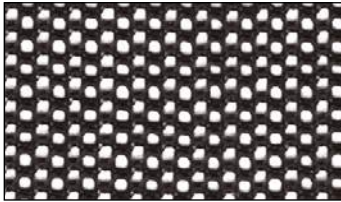


MATERIAL NO: TM

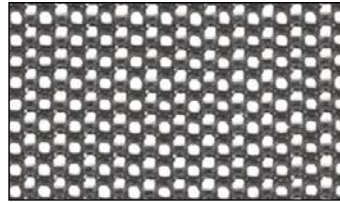
85% Polyester / 15% Spandex

Custom open weave mesh made with stretch weave technology for all-day comfort, maximum breathability, and a soft high-end hand feel.

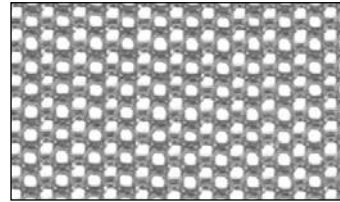
COLOR OPTIONS



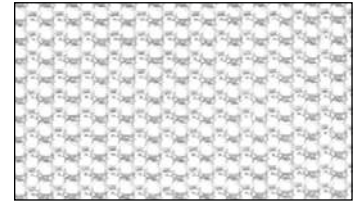
BLACK / 04001



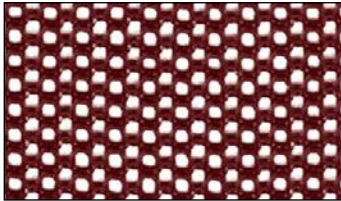
CHARCOAL / 09001



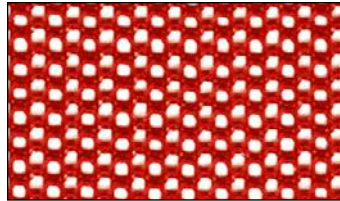
STEEL / 09002



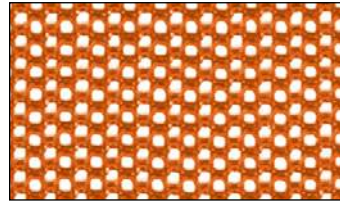
WHITE / 01001



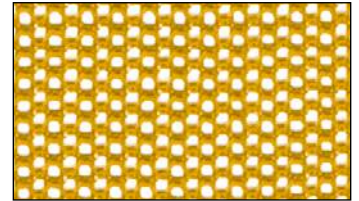
MAROON / 23001



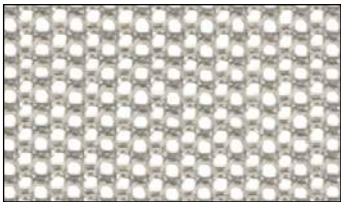
RED / 02001



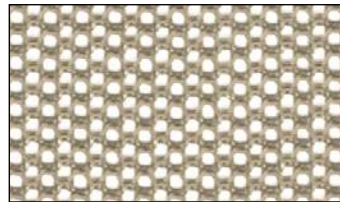
ORANGE / 08001



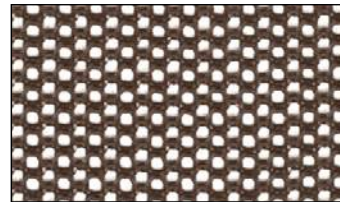
ATHLETIC GOLD / 08003



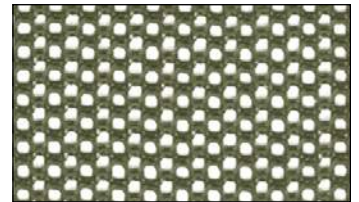
STONE / 13001



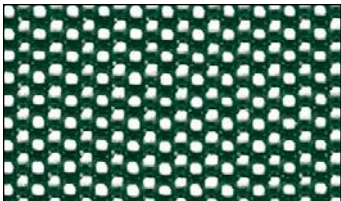
KHAKI / 13002



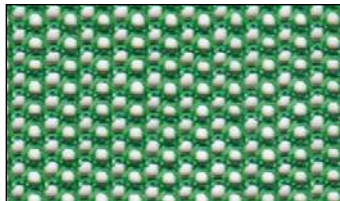
BROWN / 11001



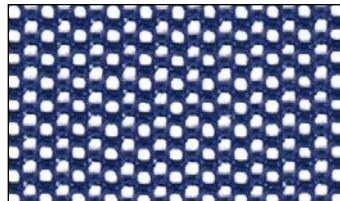
SURPLUS / 06003



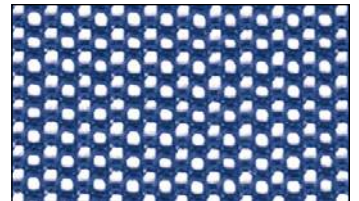
FOREST / 06002



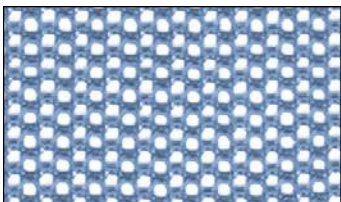
GREEN / 06001



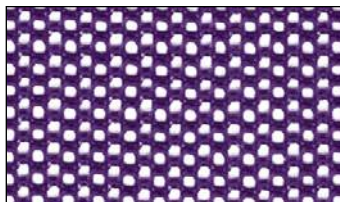
NAVY / 07001



ROYAL / 05001



CAROLINA / 05002



PURPLE / 15001

TRITECH 1 OF 2



MATERIAL NO: TT

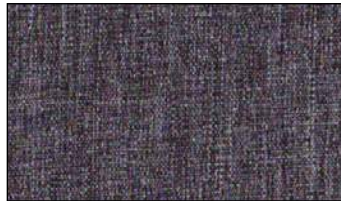
90% Polyester / 10% Spandex

Smooth woven fabric designed and developed to be a durable, high-performance option with an athleisure lifestyle look. The trifecta of performance features includes lightweight 4-way stretch, moisture-wicking technology, & superior UV sun protection. Custom laser-perforations can be added for maximum ventilation & breathability.

COLOR OPTIONS



BLACK / 04001



BLACK HEATHER / 09003



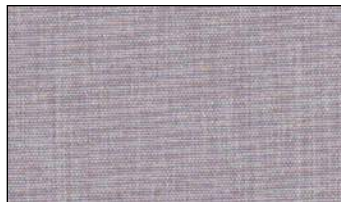
CHARCOAL / 09004



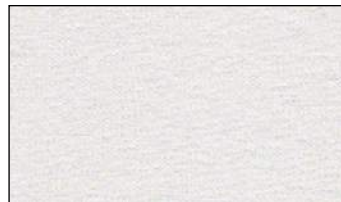
CHARCOAL HEATHER / 09001



STEEL / 09005



STEEL HEATHER / 15001



WHITE / 01001



MAROON HEATHER / 23001



SCARLET HEATHER / 02001



TEXAS ORANGE HEATHER / 11001



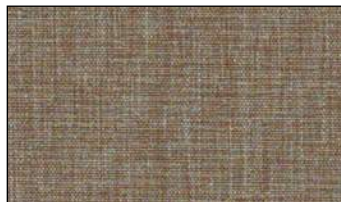
ORANGE / 08001



STONE / 13003



KHAKI HEATHER / 13002



SURPLUS HEATHER / 13001



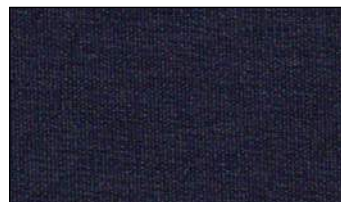
FOREST HEATHER / 06001



LIME / 06002



SEAFOAM HEATHER / 06003



NAVY / 07001



NAVY HEATHER / 09002



ROYAL HEATHER / 05001

TRITECH 2 OF 2



MATERIAL NO: TT

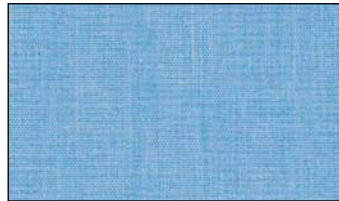
90% Polyester / 10% Spandex

Smooth woven fabric designed and developed to be a durable, high-performance option with an athleisure lifestyle look. The trifecta of performance features includes lightweight 4-way stretch, moisture-wicking technology, & superior UV sun protection. Custom laser-perforations can be added for maximum ventilation & breathability.

COLOR OPTIONS



AQUA HEATHER / 05003



CAROLINA HEATHER /
05002

PERFORATED TRITECH 1 OF 2



MATERIAL NO: TTP

90% Polyester / 10% Spandex

Perforated TriTech is founded on a trifecta of performance features; lightweight, moisture wicking and SPF 30 sun protection, and with ventilating perforations adds superior breathability and cooling to the mix. A uniform 1mm perforated dot pattern highlights our latest performance fabric.

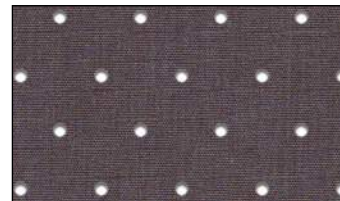
COLOR OPTIONS



BLACK / 04001



BLACK HEATHER /
09003



CHARCOAL / 09004



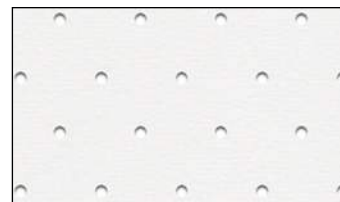
CHARCOAL HEATHER /
09001



STEEL / 09005



STEEL HEATHER /
15001



WHITE / 01001



MAROON HEATHER /
23001

PERFORATED TRITECH

2 OF 2



MATERIAL NO: TTP

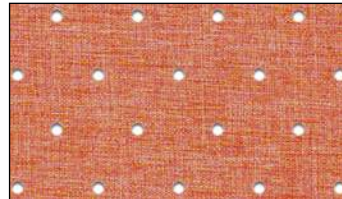
90% Polyester / 10% Spandex

Perforated TriTech is founded on a trifecta of performance features; lightweight, moisture wicking and SPF 50 sun protection, and with ventilating perforations adds superior breathability and cooling to the mix. A uniform 1mm perforated dot pattern highlights our latest performance fabric.

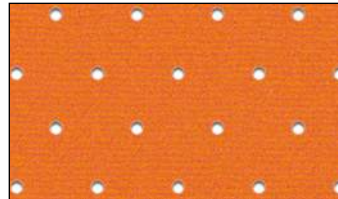
COLOR OPTIONS



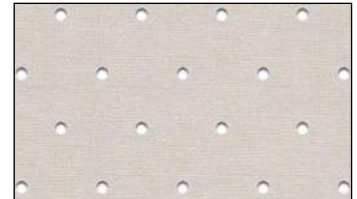
SCARLET HEATHER /
02001



TEXAS ORANGE HEATHER /
11001



ORANGE / 08001



STONE / 13003



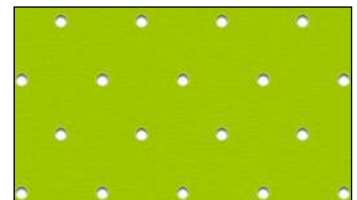
KHAKI HEATHER /
13002



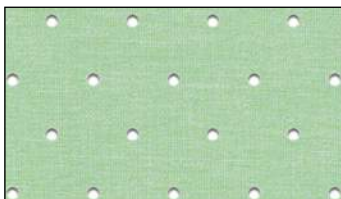
SURPLUS HEATHER /
13001



FOREST HEATHER /
06001



LIME / 06002



SEAFOAM HEATHER /
06003



NAVY / 07001



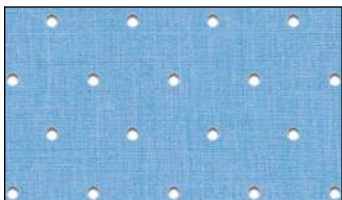
NAVY HEATHER /
09002



ROYAL HEATHER /
05001



AQUA HEATHER / 05003



CAROLINA HEATHER /
05002

UV LITE 1 OF 2



MATERIAL NO: UV

100% Polyester

Subtly textured, lightweight woven fabric, specially designed for sun protection. It is rated at SPF 50 (blocking 98% of UVB rays), making it an excellent option for any outdoor use.

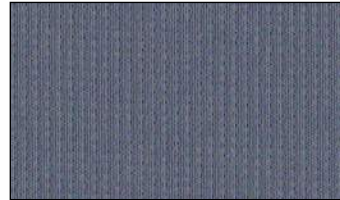
COLOR OPTIONS



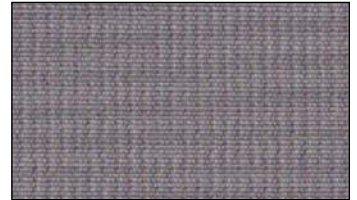
BLACK / 04001



CHARCOAL / 09001



METAL / 09013



STEEL / 09015



WHITE / 01001



CRIMSON / 02008



RED / 02002



FUCHSIA / 02011



PINK / 21001



PETAL / 21011



MANGO / 02021



TEXAS ORANGE / 08011



ORANGE / 08004



ATHLETIC GOLD / 12007



STONE / 13001



KHAKI / 13002



OLIVE / 06004



FOREST / 06026



GREEN / 06025



AVOCADO / 06001



LIME / 06005



SEAFOAM / 06015



NAVY / 07003



ROYAL / 05020

UV LITE 2 OF 2



MATERIAL NO: UV

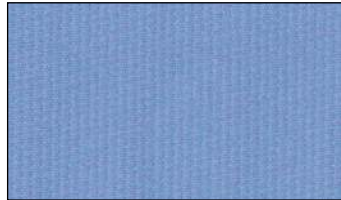
100% Polyester

Subtly textured, lightweight woven fabric, specially designed for sun protection. It is rated at SPF 50 (blocking 98% of UVB rays), making it an excellent option for any outdoor use.

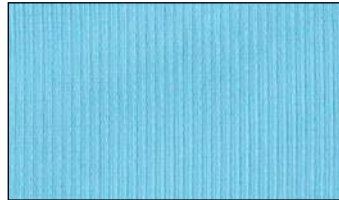
COLOR OPTIONS



AQUA / 05039



CAROLINA / 05005



FROST / 05001



PURPLE / 15004



LILAC / 15009

PERFORATED UV LITE 1 OF 2



MATERIAL NO: UVP

100% Polyester

Perforated UV Lite adds increased breathability to our UV Lite woven fabric, specially designed for sun protection. It is rated at SPF 50 (blocking 98% of UVB rays), making it an excellent option for any outdoor use.

COLOR OPTIONS



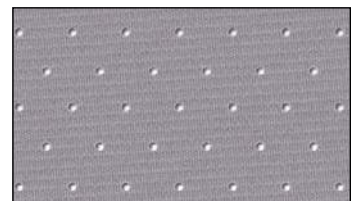
BLACK / 04001



CHARCOAL / 09001



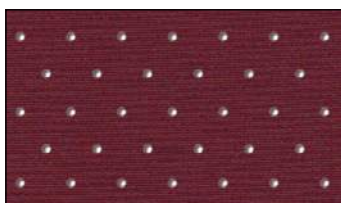
METAL / 09013



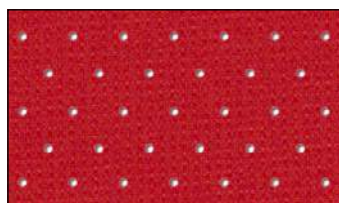
STEEL / 09015



WHITE / 01001



CRIMSON / 02008



RED / 02002



FUCHSIA / 02011

PERFORATED UV LITE

2 OF 2

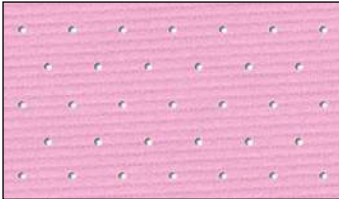


MATERIAL NO: UVP

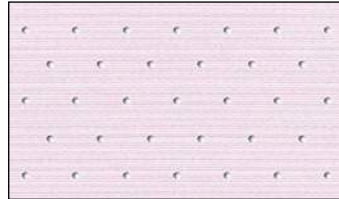
100% Polyester

Perforated UV Lite adds increased breathability to our UV Lite woven fabric, specially designed for sun protection. It is rated at SPF 50 (blocking 98% of UVB rays), making it an excellent option for any outdoor use.

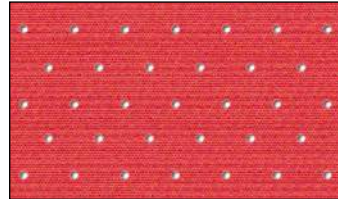
COLOR OPTIONS



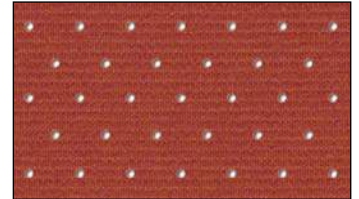
PINK / 21001



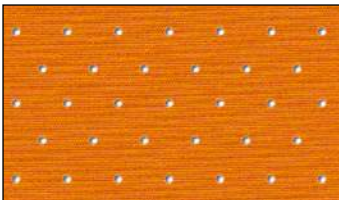
PETAL / 21011



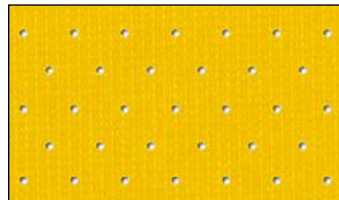
MANGO / 02021



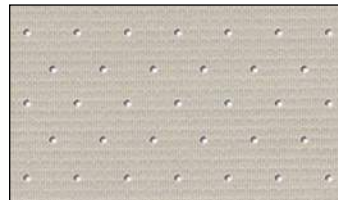
TEXAS ORANGE / 08011



ORANGE / 08004



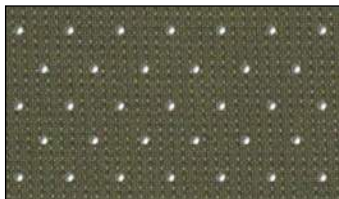
ATHLETIC GOLD / 12007



STONE / 13001



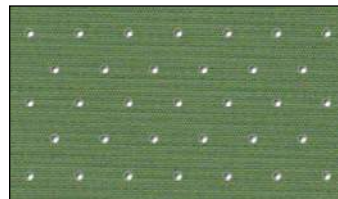
KHAKI / 13002



OLIVE / 06004



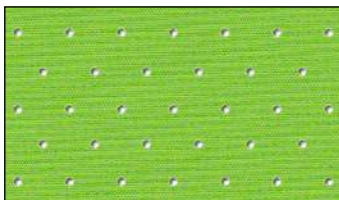
FOREST / 06026



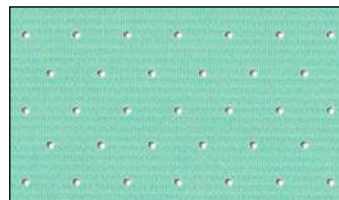
AVOCADO / 06001



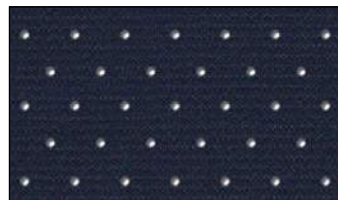
GREEN / 06025



LIME / 06005



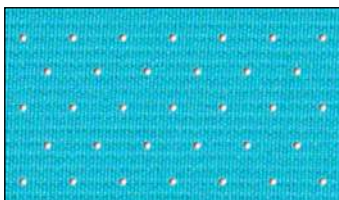
SEAFOAM / 06015



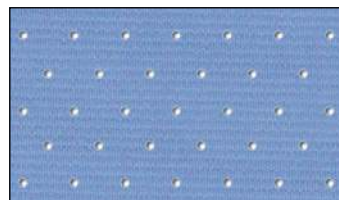
NAVY / 07003



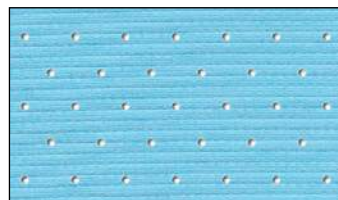
ROYAL / 05020



AQUA / 05039



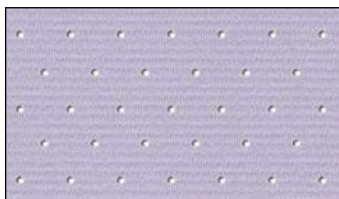
CAROLINA / 05005



FROST / 05001



PURPLE / 15004



LILAC / 15009

ACRYLIC WOOL



MATERIAL NO: AW

70% Acrylic / 30% Wool

Durable twill weave fabric with a semi coarse hand feel that is indicative of many wool blend fabrics. Recognizable by the slightly more pronounced diagonal texture of the weave that appears on the face of this fabric.

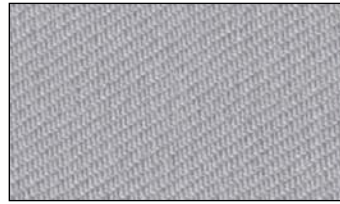
COLOR OPTIONS



BLACK / 28



CHARCOAL / 30



STEEL / 6



WHITE / 15



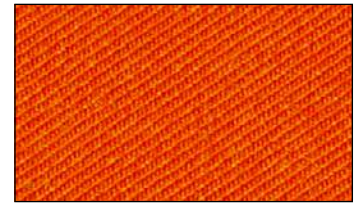
MAROON / 21



CRIMSON / 13



SCARLET / 11



ORANGE / 7



BROWN / 23



FOREST / 24



GREEN / 17



NAVY / 22



ROYAL / 4

HERITAGE FLANNEL



MATERIAL NO: HF

50% Wool / 50% Polyester

Polyester medium-weight, soft wool blend flannel fabric that has a brushed or fuzzy finish. Perfect for a vintage or outdoorsy vibe.

COLOR OPTIONS



BLACK / 2



DARK GREY HEATHER / 23



GREY HEATHER / 341



CRIMSON / 38



MOSS / 20



NAVY / 113

ORGANIC CANVAS 1 OF 2



MATERIAL NO: OC

100% Organic Cotton

Durable woven fabric with a soft hand feel. The perfect Eco-Friendly option for those who want a unique natural look and casual style.

COLOR OPTIONS



BLACK / 04001



CHARCOAL / 09004



CRIMSON / 02006



SCARLET / 02003



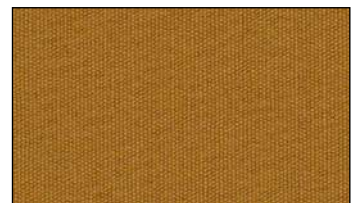
BOYSENBERRY / 03002



SULPHUR / 12001



BIRCH / 13002



ACORN / 12003

ORGANIC CANVAS 2 OF 2



MATERIAL NO: OC

100% Organic Cotton

Durable woven fabric with a soft hand feel. The perfect Eco-Friendly option for those who want a unique natural look and casual style.

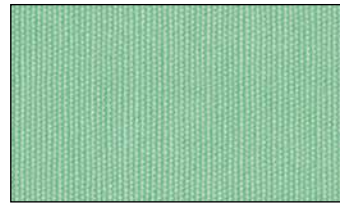
COLOR OPTIONS



BROWN / 11001



OLIVE / 06007



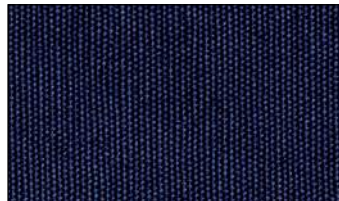
SEAFOAM / 06014



MINERAL BLUE / 05008



QUARRY / 05015



NAVY / 05014



DUSK / 07003



CAROLINA / 05012

STRETCH WOOL

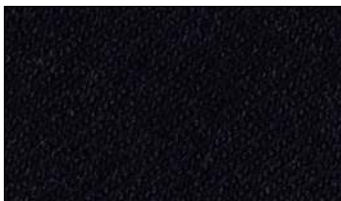


MATERIAL NO: SW

88% Acrylic / 10% Wool / 2% Spandex

Durable twill weave fabric specially designed to stretch for all-day comfort. Recognizable by its semi coarse hand feel and slightly more pronounced diagonal texture of the weave. Great for flexible sizing options and performance.

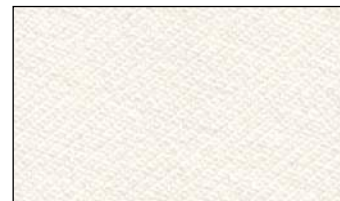
COLOR OPTIONS



BLACK / 208



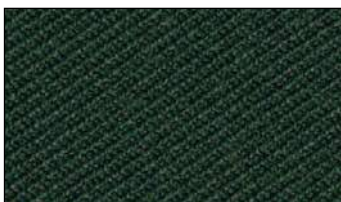
STEEL / 86



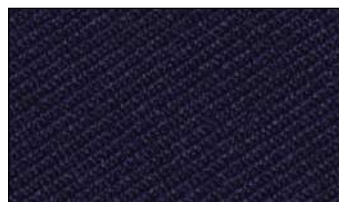
WHITE / 36



SCARLET / 207



FOREST / 214



NAVY / 213



ROYAL / 59

BOUCLE TWEED



MATERIAL NO: S

100% Polyester

This coarse textured fabric brings a unique homespun look that is both soft and durable.

COLOR OPTIONS



LICORICE / 12



COFFEE / 11



CHOCOLATE / 10

BUFFALO CHECK



MATERIAL NO: S

100% Cotton

Unbrushed flannel in the traditional lumberjack style Buffalo Check. Outdoorsy & fun, what more can you ask for.

COLOR OPTIONS



RED / 082



ROYAL / 127

CORDUROY



MATERIAL NO: S

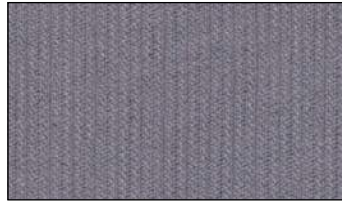
100% Cotton

100% Cotton fine-wale cord brings a rustically refined, heritage-inspired twist to any piece of headwear you can think up.

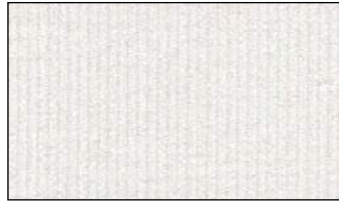
COLOR OPTIONS



BLACK / 1



GREY / 9



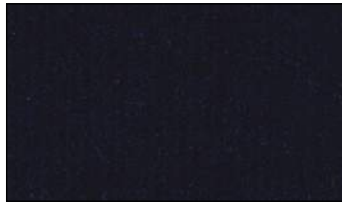
WHITE / 8



CAMEL / 2



DARK OLIVE / 40



NAVY / 35

CORK



MATERIAL NO: S

100% Polyester

Add our Cork fabric to most of our silhouettes or highlight the Front Panels, Button, Visor and Undervisor. Call attention to your logo by embroidering it on a Cork applique secured to the front panel in a variety of different stitch options.

COLOR OPTIONS



CORK / 68L

DENIM



MATERIAL NO: S

Sturdy midweight twill weave fabric. Protip: wash it for a retro jean look.

COLOR OPTIONS



BLACK / 171
100% Cotton



INDIGO / 206
85% Polyester / 15% Cotton

DOBBY SLUB

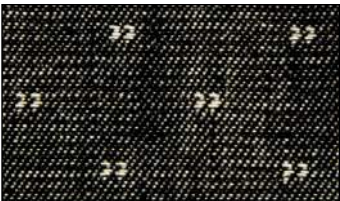


MATERIAL NO: S

100% Cotton

Custom midweight denim-like fabric with a slub texture and contrast dobby pattern that can add stylish detail to any hat.

COLOR OPTIONS



BLACK / 1388



NAVY / 1386

FLECK TWEED



MATERIAL NO: S

100% Polyester

This coarse textured fabric has splashes of color weaved into this unique homespun look that is both soft and durable.

COLOR OPTIONS



BLACK / 33



BROWN / 32

GLEN PLAID



MATERIAL NO: S

65% Polyester / 33% Viscose / 2% Spandex

Lightweight, medium check, Glen plaid pattern with pops of color for a twist on this old classic. Great for dressing up or down.

COLOR OPTIONS



BLACK / 701

HAWAIIAN



MATERIAL NO: S

80% Cotton / 20% Polyester

Printed canvas features a playful & vacation-ready motif of vintage-inspired hibiscus, pineapples, and palm leaves. Stand out in the best way possible.

COLOR OPTIONS



BLACK / 205



BLUE / 204

HEATHER JERSEY

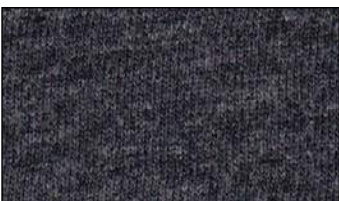


MATERIAL NO: S

100% Cotton

Single-knit jersey fabric with heathered color variations from blending multiple yarns into one. Best known for its stretch and softness that makes it great for both athletic and lifestyle headwear.

COLOR OPTIONS



CHARCOAL / 016



STEEL / 013

HERRINGBONE



MATERIAL NO: S

Broken twill weave with alternating righthand and lefthand chevrons creating a fishbone type pattern. This traditional fabric is always in style and brings a touch of class wherever used.

COLOR OPTIONS



BLACK / 54

90% Polyester / 10% Wool



GREY / 62

90% Polyester / 10% Wool



HUNTER / 414

50% Wool / 30% Viscose /
20% Polyester



INDIGO / 412

50% Wool / 50% Polyester

MOSSY OAK®



MATERIAL NO: MO

100% Cotton

Official licensed fabrics. Mossy Oak® is world renowned for realistic and incredibly effective camouflage patterns. An essential for any outdoor enthusiast.

COLOR OPTIONS



BREAK-UP COUNTRY / 815



SHADOW GRASS BLADES / 816

NATIVE



MATERIAL NO: S

100% Cotton

Woven fabric inspired by the vibrant colors and time-honored patterns of indigenous people from around the globe. A truly exciting fabric for interesting people.

COLOR OPTIONS



NATIVE / 706

OXFORD CHAMBRAY



MATERIAL NO: S

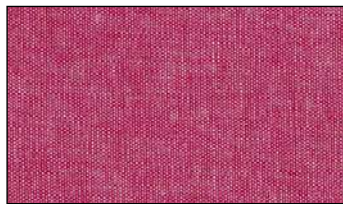
100% Cotton

Lightweight, plain-weave fabric with a soft hand feel. Woven using both colored and white threads, giving it a two-toned look when up close and a softer solid-colored look at a distance for a classic casual look.

COLOR OPTIONS



BLACK / 5



SCARLET / 321



ROYAL / 21

SEERSUCKER



MATERIAL NO: S

100% Cotton

Thin, puckered, classically striped fabric. A great look for those spring and summer days.

COLOR OPTIONS



PINK / 978



CAROLINA / 979

SUEDE



MATERIAL NO: S

100% Polyester

Animal-friendly faux suede has a luxurious realistic napped finish that is soft to the touch, stylish, and long-lasting, a perfect option to elevate any design.

COLOR OPTIONS



BLACK / 4



GRAPHITE / 38



TOBACCO / 56



BROWN / 107



MIDNIGHT / 7

TROPICAL



MATERIAL NO: S

93% Cotton / 7% Spandex

Lightweight printed fabric. Pukka's take on the classic tropical pattern, combining bright flowers and vibrant palm leaves for a unique fabric with fun designs.

COLOR OPTIONS



MAGENTA / 146



CREAM / 144



BLUE / 145

WAXED CANVAS

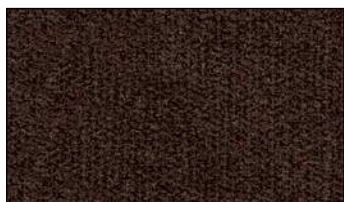


MATERIAL NO: S

100% Cotton Canvas

This durable, lightly waxed, 100% cotton canvas fabric has a classic shine-free finish that looks great and adds an extra layer of weather resistance to your headwear.

COLOR OPTIONS



BRACKEN / 11013



BROWN SUGAR / 11012



CAPULET OLIVE / 06011

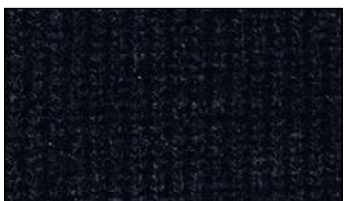
ACRYLIC YARN 1 OF 2

MATERIAL NO: K

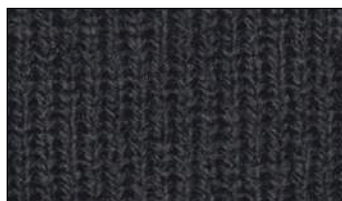
100% Acrylic

Standard weight yarn that can be used in various knit silhouettes and patterns. We've sourced our yarns from leading mills so that we can offer you a soft, high-quality yarn that is sure to help keep you warm on a cold day.

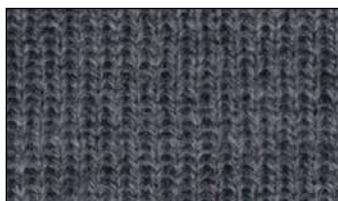
COLOR OPTIONS



BLACK / 36



CHARCOAL / 15



CHARCOAL HEATHER / 143



METAL / 14



STEEL / 13



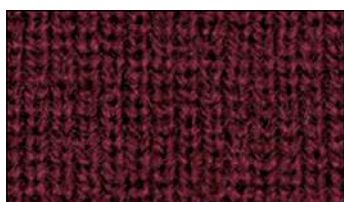
STEEL HEATHER / 218



WHITE / 1



MAROON / 155



CRIMSON / 129



SCARLET / 163



FUCHSIA / 279



PINK / 188

ACRYLIC YARN 2 OF 2

MATERIAL NO: K

100% Acrylic

Standard weight yarn that can be used in various knit silhouettes and patterns. We've sourced our yarns from leading mills so that we can offer you a soft, high-quality yarn that is sure to help keep you warm on a cold day.

COLOR OPTIONS



TEXAS ORANGE / 546



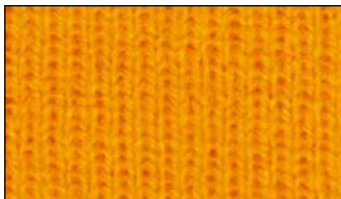
ORANGE / 207



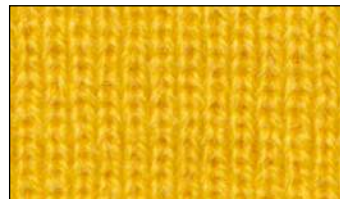
NUGGET / VEGAS / 240



GOLD / 182



ATHLETIC GOLD / 80



YELLOW / 190



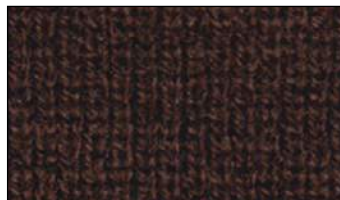
STONE / 224



KHAKI / 5



LATTE / 1094



BROWN / 10



SURPLUS / 52



FOREST / 126



GREEN / 49



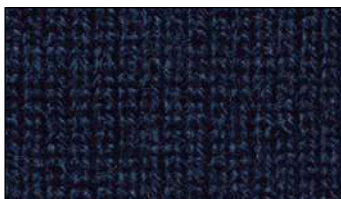
LIME / 506



TEAL / 383



NAVY / 34



TWILIGHT / 206



ROYAL / 121



SLATE / 30



ELECTRIC BLUE / 421



AQUA / 336



CAROLINA / 249



PURPLE / 131

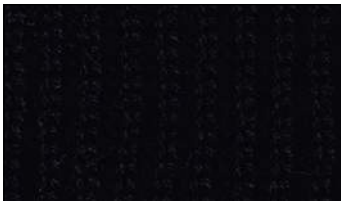
LIGHTWEIGHT YARN

MATERIAL NO: D

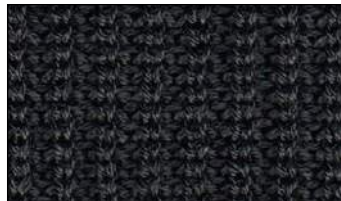
100% Acrylic

This yarn can be used in various knit silhouettes and patterns. We've sourced our yarns from leading mills so that we can offer you a soft, high-quality yarn, perfect for creating your very own lightweight or lifestyle knit.

COLOR OPTIONS



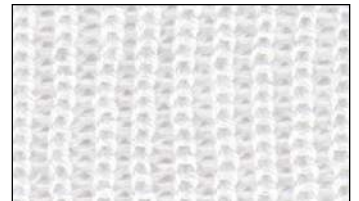
BLACK / 002



CHARCOAL / 005



STEEL / 010



WHITE / 062



MAROON / 126



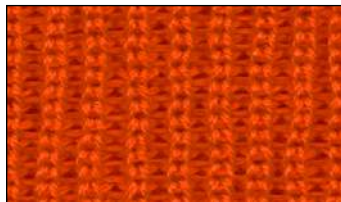
CRIMSON / 095



SCARLET / 096



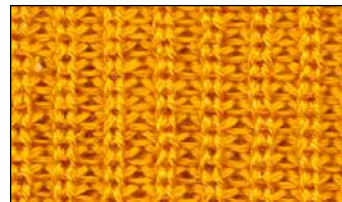
RUST / 132



ORANGE / 092



GOLD / 203



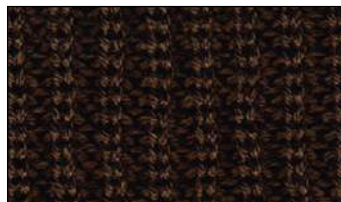
ATHLETIC GOLD / 211



CREAM / 169



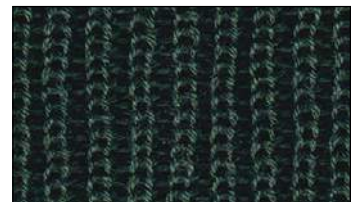
STONE / 216



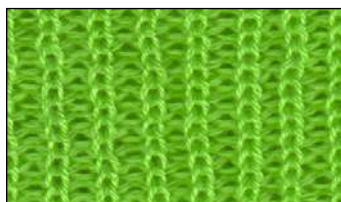
BROWN / 222



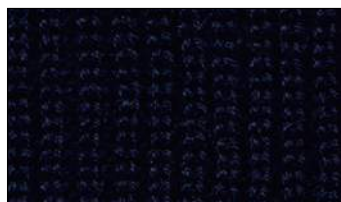
SURPLUS / 163



FOREST / 108



LIME / 113



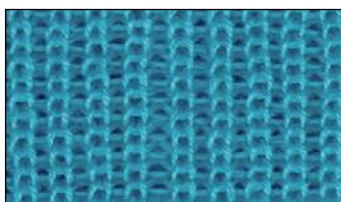
NAVY / 040



TWILIGHT / 051



SLATE / 177



AQUA / 023

COTTON YARN

MATERIAL NO: CK

100% Cotton

A 100% cotton yarn, with cotton considered the king of the natural fibers, it is among the softest, smoothest and most comfortable yarns available. It will break in nicely and hold a longer life than acrylic.

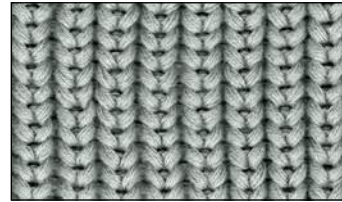
COLOR OPTIONS



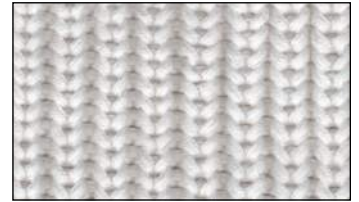
BLACK / 132



CHARCOAL / 288



STEEL / 429



WHITE / 004



MAROON / 142



TEXAS ORANGE / 441



BROWN / 153



OLIVE / 397



FOREST / 268



NAVY / 392

HEATHER YARN

MATERIAL NO: H

70% Acrylic / 30% Polyester

Standard weight yarn that can be used in various silhouettes, knits, and patterns. We've sourced our yarns from leading mills so that we can offer you a soft, high-quality yarn that is sure to help keep you warm on a cold day.

COLOR OPTIONS



BLACK / 09051



CHARCOAL / 09028



CRIMSON / 03018



CREAM / 12048



LATTE / 13020



ACORN / 12050



BROWN / 11017



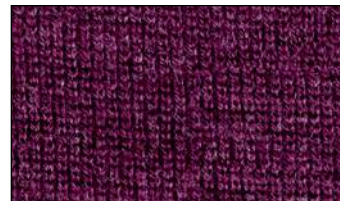
FOREST / 10041



TWILIGHT / 05022



SLATE / 05078



PLUM / 15069