



# FABRIC & COLOR GUIDE

SUPERIOR QUALITY • LIMITLESS OPTIONS • TRUE CUSTOMIZATION



## FABRIC KEY



SUN PROTECTION  
W/ UPF 50



ADJUSTABLE  
HATS ONLY



AVAILABLE ON  
ULTRA-FIT



ECO-FRIENDLY  
FABRICS



SUN PROTECTION  
W/ UPF 30



STRETCH-FIT  
HATS ONLY



ADJUSTABLE OR  
STRETCH-FIT

## TABLE OF CONTENTS

### STANDARD FABRICS

COTTON TWILL .....	3
COTTON RIPSTOP .....	5
CAMO .....	6
OXFORD LIGHTWEIGHT COTTON .....	7
POLYFOAM .....	7
POLY TWILL .....	8
SOLID LIGHTWEIGHT COTTON .....	8
STRETCH TWILL .....	9
TRUCKER MESH .....	9

### PERFORMANCE FABRICS

DRIMAX .....	11
NYLON .....	12
PERFORMANCE MESH .....	13
TECH MESH .....	14
TRITECH .....	15
PERFORATED TRITECH .....	17
UV LITE .....	20
PERFORATED UV LITE .....	22
VENTTECH .....	23

### ECO-FRIENDLY FABRICS

ECOWEAVE .....	24
HEMP .....	24
ORGANIC CANVAS .....	25
RECYCLED DIAMOND LITE .....	26
RECYCLED TRUCKER MESH .....	27

### PREMIUM FABRICS

ACRYLIC WOOL .....	27
HERITAGE FLANNEL .....	28
JERSEY FLEECE .....	29
STRETCH WOOL .....	29

### SPECIALTY FABRICS

ALOHA .....	29
CORDUROY .....	30
CORK .....	30
CROSS WALE CORDUROY .....	31
DENIM .....	31

### SPECIALTY FABRICS (CONTINUED)

DENIM DOBBY .....	31
FLANNEL .....	32
HAWAIIAN .....	32
HORSETAIL .....	32
LEOPARD .....	33
PLUMERIA .....	33
SUEDE .....	34
TIE-DYE .....	34
WAXED CANVAS .....	35
WIDE WALE CORDUROY .....	35

### YARNS

ACRYLIC YARN .....	36
HEATHER YARN .....	38
COTTON YARN .....	39
RECYCLED YARN .....	40
TIE-DYE YARN .....	40

### EMBROIDERY THREAD OPTIONS

STANDARD THREAD .....	41
METALLIC THREAD .....	45
NEON THREAD .....	46

### CLOSURE OPTIONS

PLASTIC SNAP .....	46
RECYCLED PLASTIC SNAP .....	48

### ROPE & CORD

TRUCKER ROPE .....	49
SPECIALTY ROPE .....	49
PREMIUM VISOR CORD .....	50

### APPLIQUE COLOR OPTIONS

FELT .....	50
------------	----

# COTTON TWILL 1 OF 3



MATERIAL NO: P

100% Cotton

Durable woven fabric with a soft hand feel identified by its diagonal texture of the weave that appears on the face of this popular fabric.

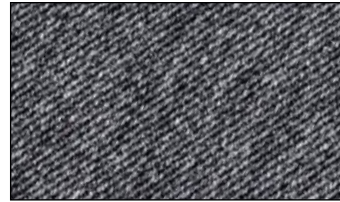
## COLOR OPTIONS



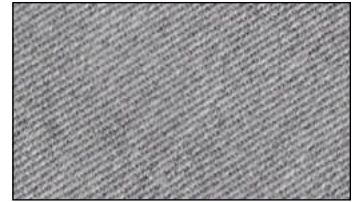
BLACK / 5



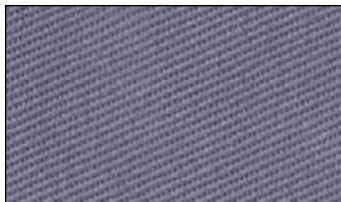
CHARCOAL / 363



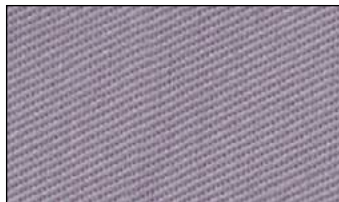
DARK GREY HEATHER / 1788



GREY HEATHER / 974



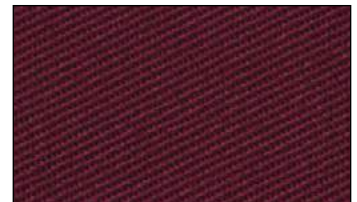
METAL / 103



STEEL / 113



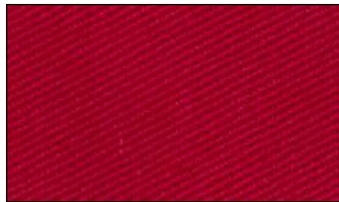
WHITE / 118



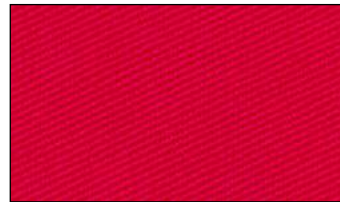
MAROON / 523



CRIMSON / 251



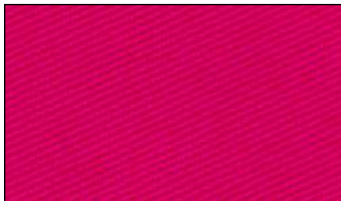
SCARLET / 337



RED / 379



NANTUCKET RED / 1190



FUCHSIA / 407



PINK / 267



MANGO / 223



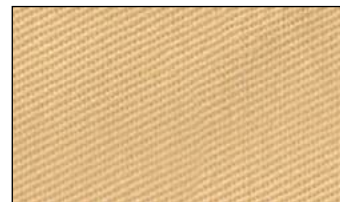
TEXAS ORANGE / 284



ORANGE / 445



TENNESSEE / 1033



NUGGET / 354



GOLD / 250



MUSTARD / 439



ATHLETIC GOLD / 215



YELLOW / 361



CREAM / 1082

# COTTON TWILL 2 OF 3

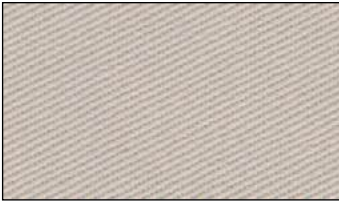


MATERIAL NO: P

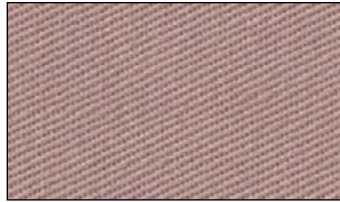
100% Cotton

Durable woven fabric with a soft hand feel identified by its diagonal texture of the weave that appears on the face of this popular fabric.

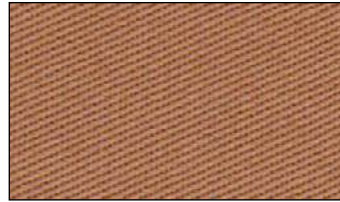
## COLOR OPTIONS



STONE / 1



KHAKI / 9



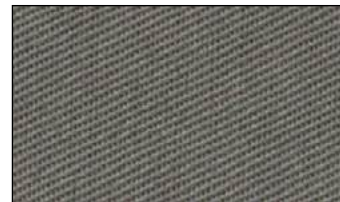
LATTE / 238



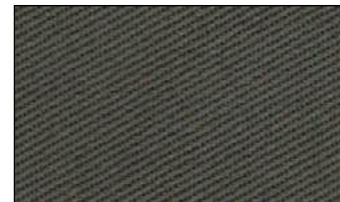
CINNAMON / 433



BROWN / 378



SURPLUS / 3



OLIVE / 419



FOREST / 217



GREEN / 548



AVOCADO / 518



SAGE / 266



KIWI / 322



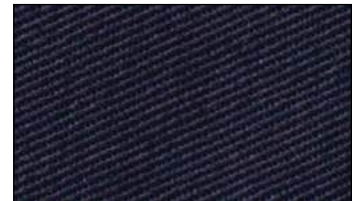
LIME / 214



SEAFOAM / 497



TEAL / 1173



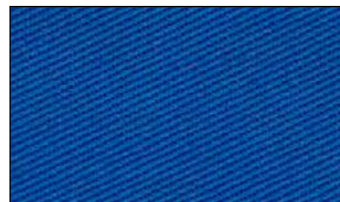
NAVY / 204



TWILIGHT / 325



COBALT / 463



ROYAL / 88



SLATE / 317



ELECTRIC BLUE / 572



AQUA / 286



CAROLINA / 112



FROST / 285

# COTTON TWILL 3 OF 3



MATERIAL NO: P

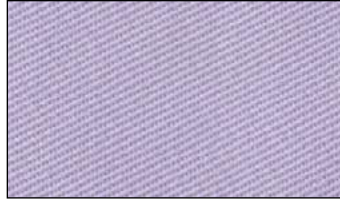
100% Cotton

Durable woven fabric with a soft hand feel identified by its diagonal texture of the weave that appears on the face of this popular fabric.

## COLOR OPTIONS



PURPLE / 481



LILAC / 364

# COTTON RIPSTOP



MATERIAL NO: CR

100% Cotton

Breathable, mid-weight ripstop material that is both rugged and refined. A perfect fit for any of your style needs from functional outdoor(s) to fun retro and everything between.

## COLOR OPTIONS



BLACK / 002



WHITE / 10



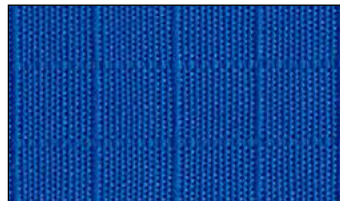
KHAKI / 13



OLIVE / 68



NAVY / 16



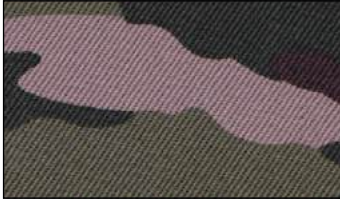
ROYAL / 9

# CAMO

Army, Tiger and StickLeaf Camo will help conceal by blending into its environment or providing a false impression. Digital Camo is a pixelated camouflage, without discernible shapes or features.

## COTTON TWILL

MATERIAL NO: P



**ARMY / 5H29**  
100% Cotton



**TIGER / 058**  
100% Cotton



**DESERT DIGITAL / 53G16**  
100% Cotton



**STICKLEAF / 3234**  
100% Cotton

## TRITECH

MATERIAL NO: TT



**VIPER OPTICAM / OPC1**  
90% Polyester / 10% Spandex



**CAYMAN OPTICAM / OPC2**  
90% Polyester / 10% Spandex



**RATTLER OPTICAM / OPC3**  
90% Polyester / 10% Spandex



**URBAN OPTICAM / OPC4**  
90% Polyester / 10% Spandex



**ARCTIC OPTICAM / OPC5**  
90% Polyester / 10% Spandex



**HYDRO OPTICAM / OPC6**  
90% Polyester / 10% Spandex

## TRUCKER MESH

MATERIAL NO: M



**ARMY / 529**  
100% Polyester



**TIGER / 058**  
100% Polyester

# OXFORD LIGHTWEIGHT COTTON

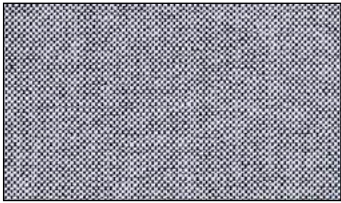


MATERIAL NO: LC

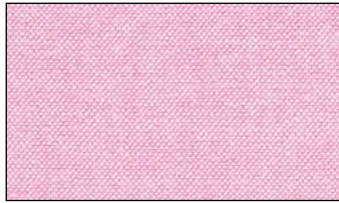
100% Cotton

This basketweave fabric is the perfect summer choice. It's woven using colored threads crossed with white giving it a two-toned look when up close and a softer solid-colored look at a distance.

## COLOR OPTIONS



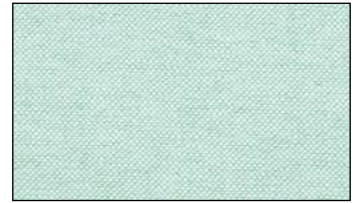
BLACK OXFORD / 3164



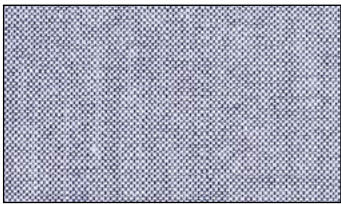
PINK OXFORD / 3165



STONE OXFORD / 3168



SEAFOAM OXFORD / 3166



NAVY OXFORD / 3167



CAROLINA OXFORD / 3163

# POLY / POLYFOAM



MATERIAL NO: PF

100% Polyester

Smooth knit fabric most commonly used with a foam backing to create a traditional Trucker Hat. This fabric accepts sublimation (white only) and screenprint artwork very well due to its finely knit smooth face.

## COLOR OPTIONS



BLACK / 1



WHITE / 4



NAVY / 8

# POLY TWILL

MATERIAL NO: PT

100% Polyester

Twill weave fabric recognizable by the diagonal texture of the weave that appears on the face of this fabric. Poly Twill will give your sublimated artwork more texture than other sublimation friendly materials.



## COLOR OPTIONS



WHITE

# SOLID LIGHTWEIGHT COTTON

1 OF 2

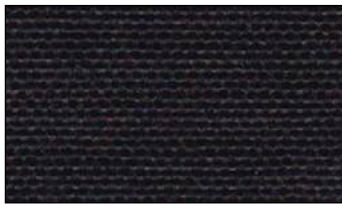


MATERIAL NO: LS

100% Cotton

Basketweave fabric made famous by its use in men's casual button-down shirts. It's a lightweight, durable fabric with UPF 30 sun protection that has a slight texture and is soft to the touch.

## COLOR OPTIONS



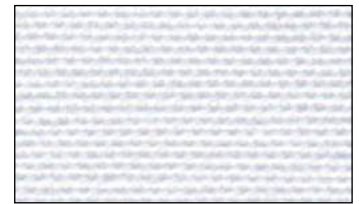
BLACK / 04002



CHARCOAL / 09001



STEEL / 09003



WHITE / 01001



CRIMSON / 03001



SCARLET / 02001



STONE / 22002



KHAKI / 22001



SURPLUS / 09002



FOREST / 06001



TEAL / 05009



NAVY / 07001

SOLID

# LIGHTWEIGHT COTTON

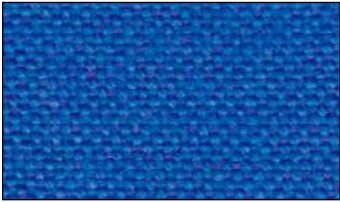
2 OF 2



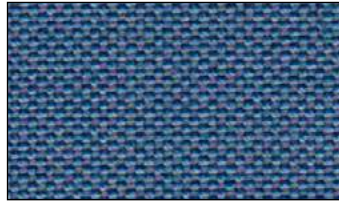
MATERIAL NO: LS

100% Cotton

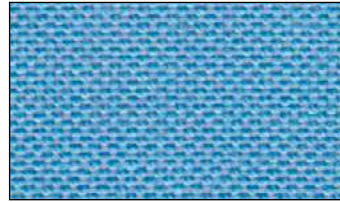
Basketweave fabric made famous by its use in men's casual button-down shirts. It's a lightweight, durable fabric with UPF 30 sun protection that has a slight texture and is soft to the touch.



ROYAL / 05005



SLATE / 05006



CAROLINA / 05007

# STRETCH TWILL

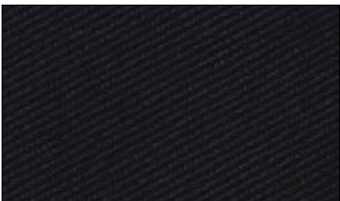


MATERIAL NO: ST

97% Cotton / 3% Spandex

Durable woven fabric, specifically designed to stretch for added comfort, performance, and flexible sizing options.

## COLOR OPTIONS



BLACK / 2



STEEL / 51



WHITE / 7



NAVY / 3

# TRUCKER MESH

1 OF 3

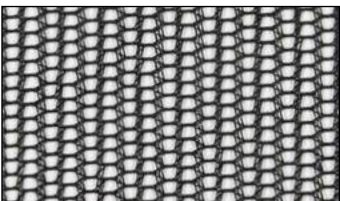


MATERIAL NO: M

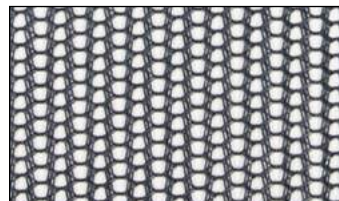
100% Polyester

Open weave mesh with a mildly structured hand feel that breaks in nicely over time or when a wash is added and is the go-to fabric for ultimate breathability.

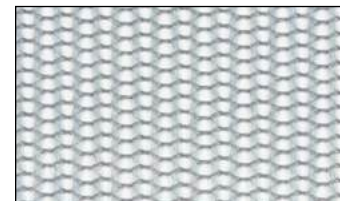
## COLOR OPTIONS



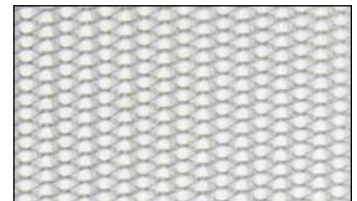
BLACK / 3



CHARCOAL / 39



STEEL / 20



STEEL OXFORD / 1

# TRUCKER MESH 2 OF 3



MATERIAL NO: M

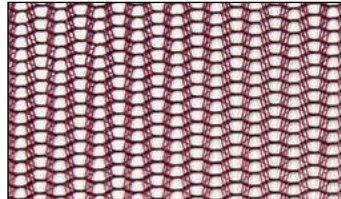
100% Polyester

Open weave mesh with a mildly structured hand feel that breaks in nicely over time or when a wash is added and is the go-to fabric for ultimate breathability.

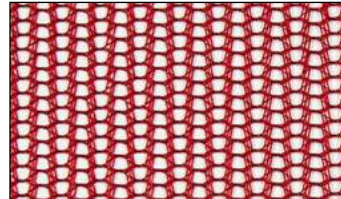
## COLOR OPTIONS



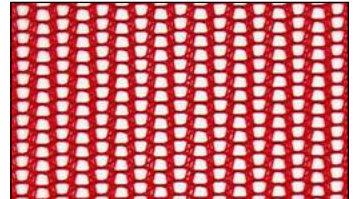
WHITE / 10



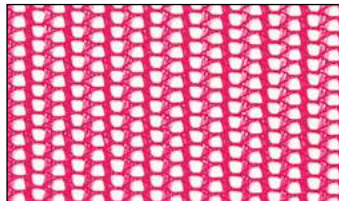
MAROON / 194



CRIMSON / 51



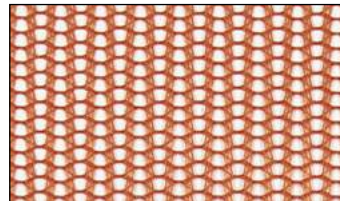
SCARLET / 2



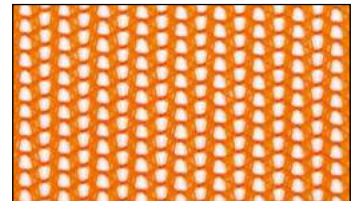
FUCHSIA / 28



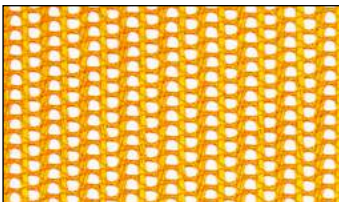
PINK / 46



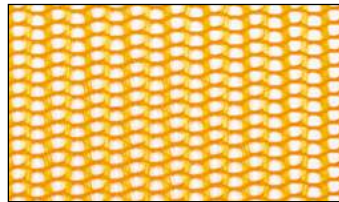
TEXAS ORANGE / 129



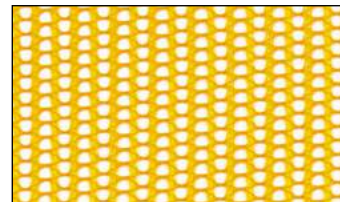
ORANGE / 12



NEON ORANGE / 70



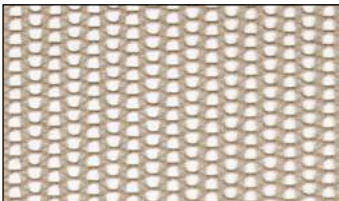
TENNESSEE / 130



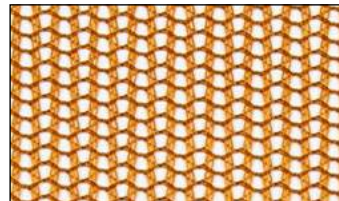
ATHLETIC GOLD / 21



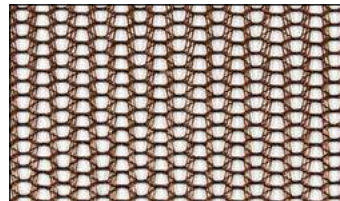
STONE / 25



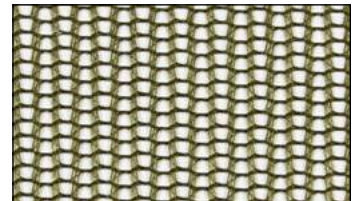
KHAKI / 11



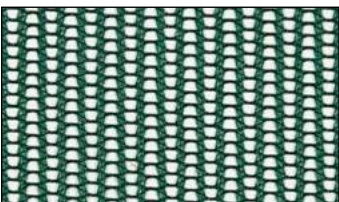
LATTE / 17



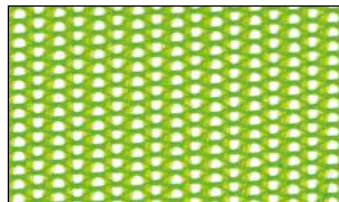
BROWN / 9



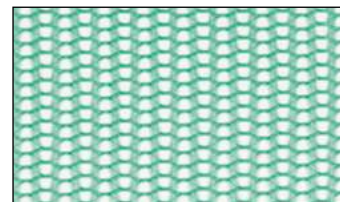
SURPLUS / 41



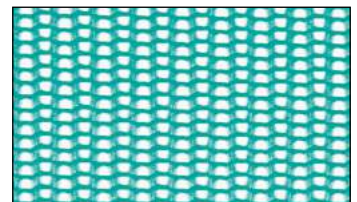
FOREST / 37



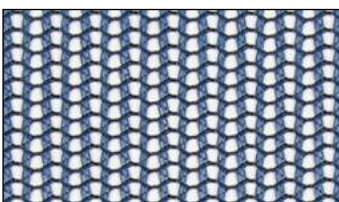
NEON GREEN / 191



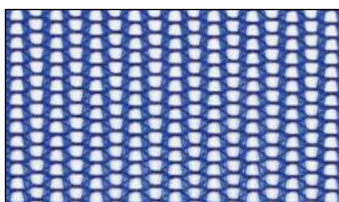
SEAFOAM / 87



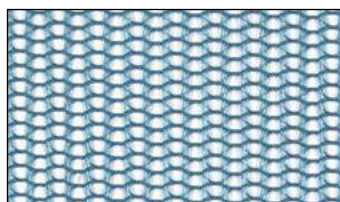
TEAL / 154



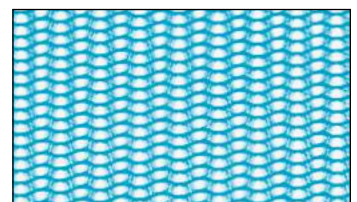
NAVY / 34



ROYAL / 55



SLATE / 284



AQUA / 144

# TRUCKER MESH 3 OF 3

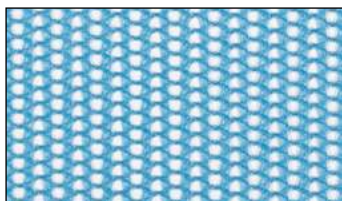


MATERIAL NO: M

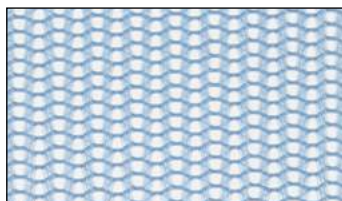
100% Polyester

Open weave mesh with a mildly structured hand feel that breaks in nicely over time or when a wash is added and is the go-to fabric for ultimate breathability.

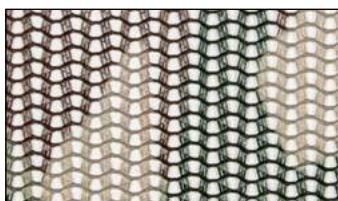
## COLOR OPTIONS



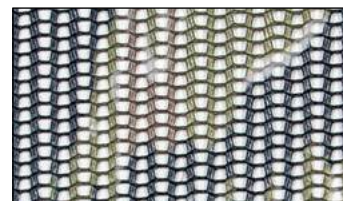
CAROLINA / 13



CAROLINA OXFORD / 44



ARMY CAMO / 529



TIGER CAMO / 058

# DRIMAX

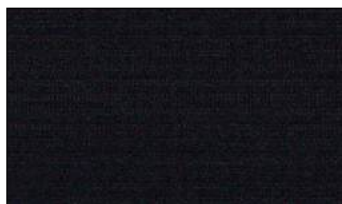


MATERIAL NO: DX

100% Polyester

Lightly textured water-resistant fabric that has been treated to repel water, keeping those who spend time outdoors in inclement weather dry.

## COLOR OPTIONS



BLACK / 1117



CHARCOAL / 1119



STONE / 1118

# NYLON

MATERIAL NO: MF

100% Polyester

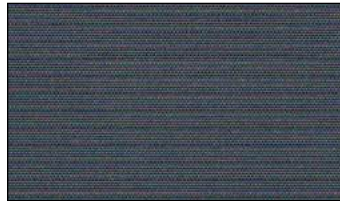
Fun and carefree lightweight fabric that is both quick-drying and breathable. Great for all-day comfort.



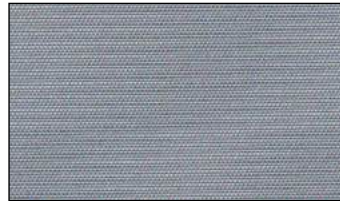
## COLOR OPTIONS



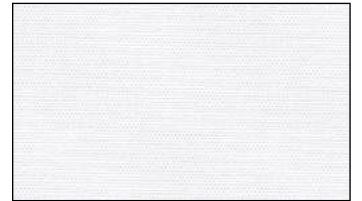
BLACK / 13



METAL / 6



STEEL / 3



WHITE / 1



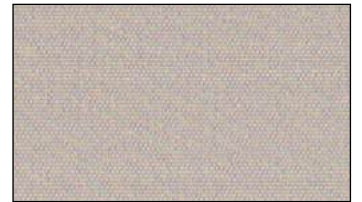
RED / 7



FUCHSIA / 21



YELLOW / 10



STONE / 20



KHAKI / 4



SEAFOAM / 39



TEAL / 38



NAVY / 14



TWILIGHT / 42



ROYAL / 12



ELECTRIC BLUE / 41



CAROLINA / 18

# PERFORMANCE MESH



MATERIAL NO: AM

100% Polyester

Performance knit fabric features an athletic look with a dimpled mesh face and flat back. The moisture-wicking, breathability, and stretch properties are great for any athletic or leisure activity.

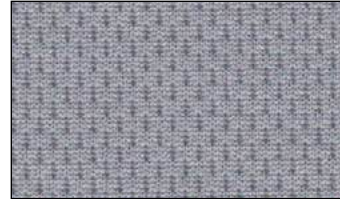
## COLOR OPTIONS



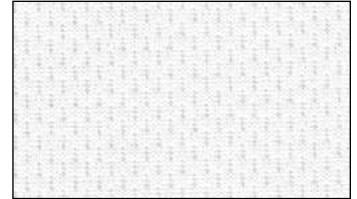
BLACK / 2



CHARCOAL / 38



STEEL / 11



WHITE / 1



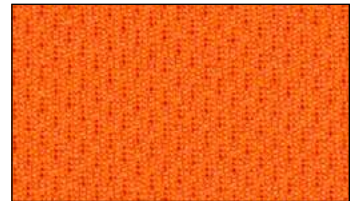
MAROON / 24



CRIMSON / 17



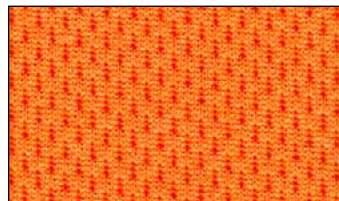
RED / 3



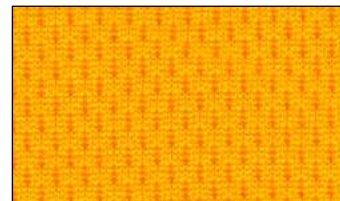
ORANGE / 45



NUGGET / 97



NEON ORANGE / 197



ATHLETIC GOLD / 26



STONE / 5



KHAKI / 118



BROWN / 36



FOREST / 20



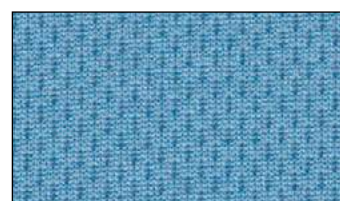
GREEN / 50



NAVY / 6



ROYAL / 4



CAROLINA / 12



PURPLE / 18

# TECH MESH

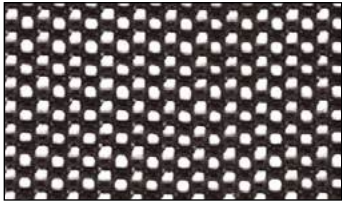


MATERIAL NO: TM

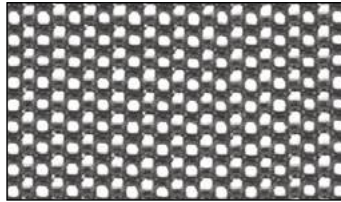
85% Polyester / 15% Spandex

Custom open weave mesh made with stretch weave technology for all-day comfort, maximum breathability, and a soft high-end hand feel.

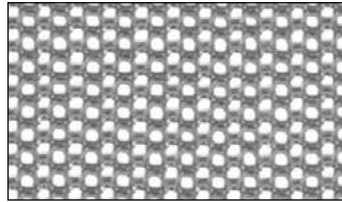
## COLOR OPTIONS



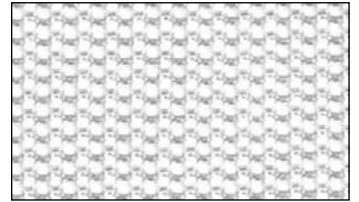
BLACK / 04001



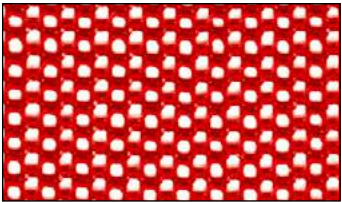
CHARCOAL / 09001



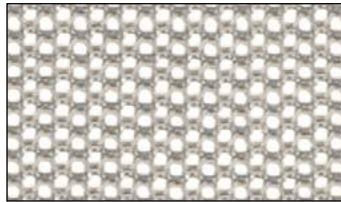
STEEL / 09002



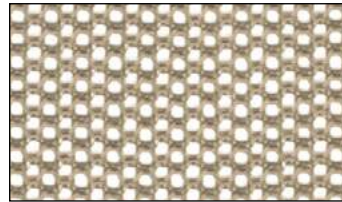
WHITE / 01002



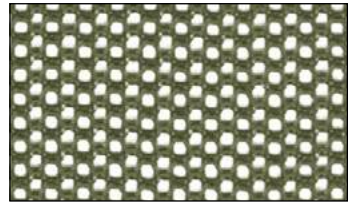
RED / 02001



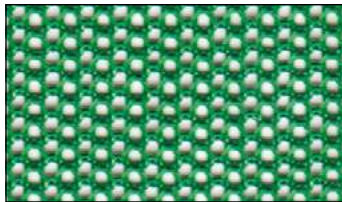
STONE / 13001



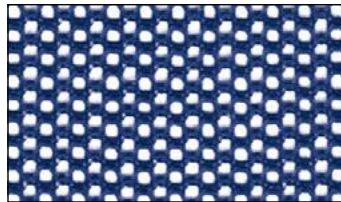
KHAKI / 13002



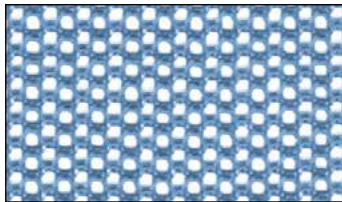
SURPLUS / 06003



GREEN / 06001



NAVY / 07001



CAROLINA / 05002

# TRITECH 1 OF 3



MATERIAL NO: TT

90% Polyester / 10% Spandex

Smooth woven fabric designed and developed to be a durable, high-performance option with an athleisure lifestyle look. The trifecta of performance features includes lightweight 4-way stretch, moisture-wicking technology, & superior UV sun protection. Custom laser-perforations can be added for maximum ventilation & breathability.

## COLOR OPTIONS



BLACK / 04001



BLACK HEATHER / 09003



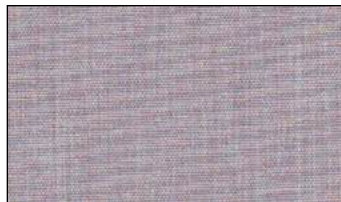
CHARCOAL / 09004



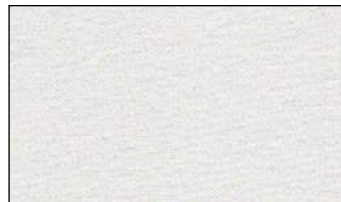
CHARCOAL HEATHER / 09001



STEEL / 09005



STEEL HEATHER / 15001



WHITE / 01001



MAROON HEATHER / 23001



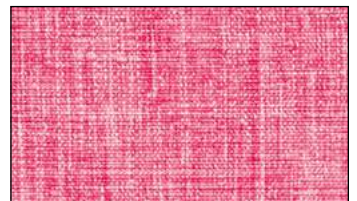
SCARLET HEATHER / 02001



RED / 02005



FUCHSIA / 02002



FUCHSIA HEATHER / 02003



PINK HEATHER / 21001



NEON PINK / 21002



TEXAS ORANGE / 11005



TEXAS ORANGE HEATHER / 11001



ORANGE / 08001



NEON ORANGE / 08003



MUSTARD / 12001



ATHLETIC GOLD / 08006

# TRITECH 2 OF 3



MATERIAL NO: TT

90% Polyester / 10% Spandex

Smooth woven fabric designed and developed to be a durable, high-performance option with an athleisure lifestyle look. The trifecta of performance features includes lightweight 4-way stretch, moisture-wicking technology, & superior UV sun protection. Custom laser-perforations can be added for maximum ventilation & breathability.

## COLOR OPTIONS



CREAM / 01002



STONE / 13003



KHAKI HEATHER /  
13002



LATTE / 11002



SURPLUS / 09006



SURPLUS HEATHER /  
13001



FOREST / 06006



FOREST HEATHER /  
06001



GREEN / 06012



NEON GREEN / 06008



SAGE / 06004



LIME / 06002



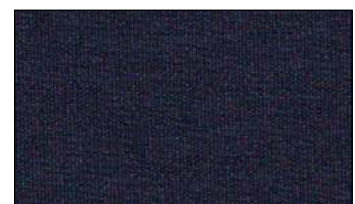
SEAFOAM HEATHER /  
06003



TEAL / 06010



QUARRY / 09010



NAVY / 07001



NAVY HEATHER /  
09002



ROYAL / 05012



ROYAL HEATHER /  
05001



DUSK / 05009

# TRITECH 3 OF 3



MATERIAL NO: TT

90% Polyester / 10% Spandex

Smooth woven fabric designed and developed to be a durable, high-performance option with an athleisure lifestyle look. The trifecta of performance features includes lightweight 4-way stretch, moisture-wicking technology, & superior UV sun protection. Custom laser-perforations can be added for maximum ventilation & breathability.

## COLOR OPTIONS



SLATE / 05006



NEON BLUE / 05011



AQUA HEATHER / 05003



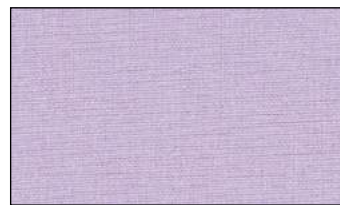
CAROLINA HEATHER / 05002



PLUM / 15002



PURPLE / 15004



LAVENDER / 15003

# PERFORATED TRITECH 1 OF 4



MATERIAL NO: TTP

90% Polyester / 10% Spandex

Perforated TriTech is founded on a trifecta of performance features; lightweight, moisture wicking and UPF 30 sun protection, and with ventilating perforations adds superior breathability and cooling to the mix. A uniform 1mm perforated dot pattern highlights our latest performance fabric.

## COLOR OPTIONS



BLACK / 04001



BLACK HEATHER / 09003



CHARCOAL / 09004



CHARCOAL HEATHER / 09001

# PERFORATED TRITECH

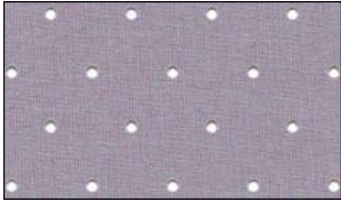
2 OF 4   

MATERIAL NO: TTP

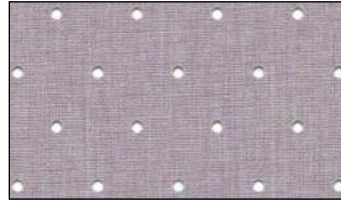
90% Polyester / 10% Spandex

Perforated TriTech is founded on a trifecta of performance features; lightweight, moisture wicking and UPF 30 sun protection, and with ventilating perforations adds superior breathability and cooling to the mix. A uniform 1mm perforated dot pattern highlights our latest performance fabric.

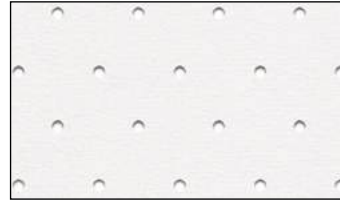
## COLOR OPTIONS



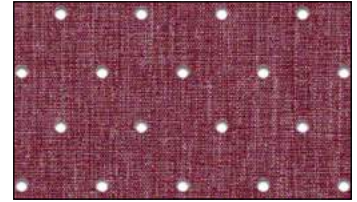
STEEL / 09005



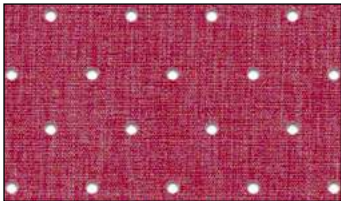
STEEL HEATHER / 15001



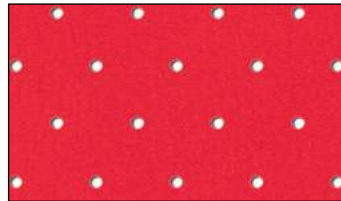
WHITE / 01001



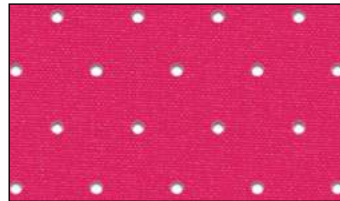
MAROON HEATHER / 23001



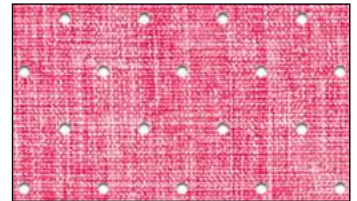
SCARLET HEATHER / 02001



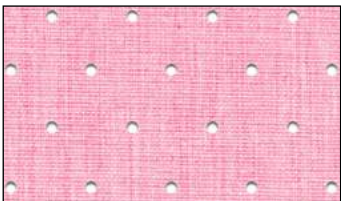
RED / 02005



FUCHSIA / 02002



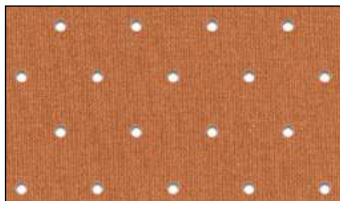
FUCHSIA HEATHER / 02003



PINK HEATHER / 21001



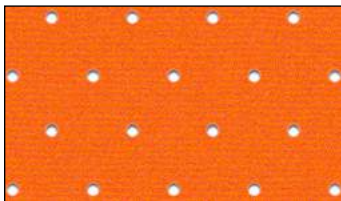
NEON PINK / 21002



TEXAS ORANGE / 11005



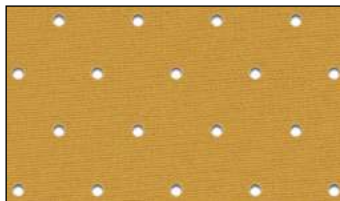
TEXAS ORANGE HEATHER / 11001



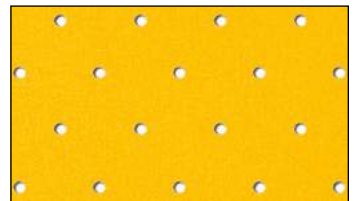
ORANGE / 08001



NEON ORANGE / 08003



MUSTARD / 12001



ATHLETIC GOLD / 08006



CREAM / 01002



STONE / 13003



KHAKI HEATHER / 13002



LATTE / 11002

# PERFORATED TRITECH

3 OF 4

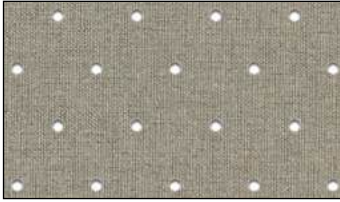


MATERIAL NO: TTP

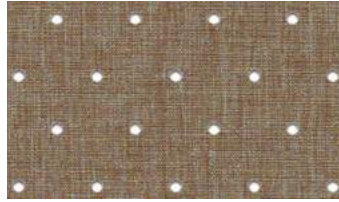
90% Polyester / 10% Spandex

Perforated TriTech is founded on a trifecta of performance features; lightweight, moisture wicking and UPF 30 sun protection, and with ventilating perforations adds superior breathability and cooling to the mix. A uniform 1mm perforated dot pattern highlights our latest performance fabric.

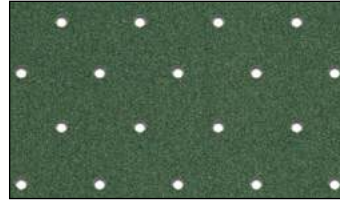
## COLOR OPTIONS



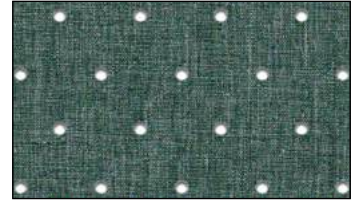
SURPLUS / 09006



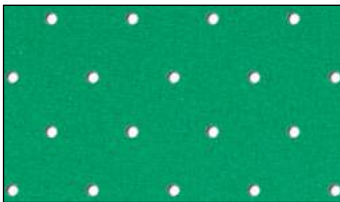
SURPLUS HEATHER /  
13001



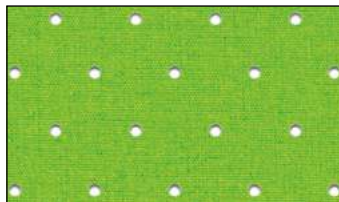
FOREST / 06006



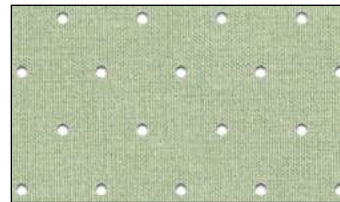
FOREST HEATHER /  
06001



GREEN / 06012



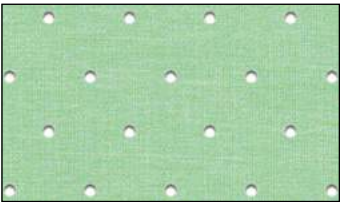
NEON GREEN / 06008



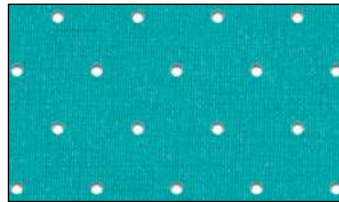
SAGE / 06004



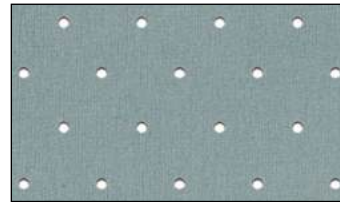
LIME / 06002



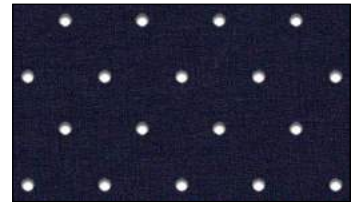
SEAFOAM HEATHER /  
06003



TEAL / 06010



QUARRY / 09010



NAVY / 07001



NAVY HEATHER /  
09002



ROYAL / 05012



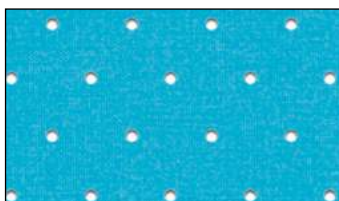
ROYAL HEATHER /  
05001



DUSK / 05009



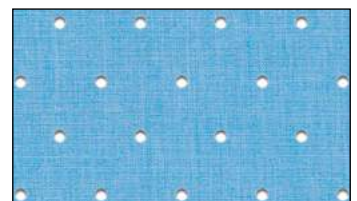
SLATE / 05006



NEON BLUE / 05011



AQUA HEATHER / 05003



CAROLINA HEATHER /  
05002

# PERFORATED TRITECH

4 OF 4

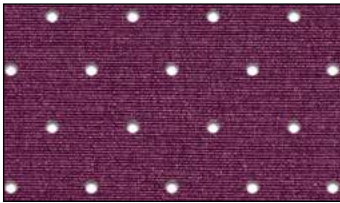


MATERIAL NO: TTP

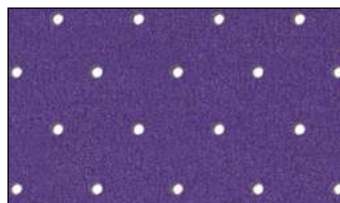
90% Polyester / 10% Spandex

Perforated TriTech is founded on a trifecta of performance features; lightweight, moisture wicking and UPF 30 sun protection, and with ventilating perforations adds superior breathability and cooling to the mix. A uniform 1mm perforated dot pattern highlights our latest performance fabric.

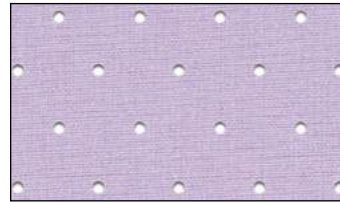
## COLOR OPTIONS



PLUM / 15002



PURPLE / 15004



LAVENDER / 15003

# UV LITE

1 OF 2

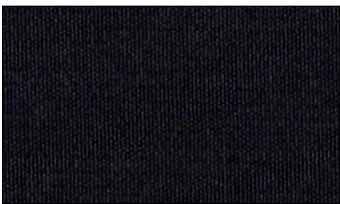


MATERIAL NO: UV

100% Polyester

Subtly textured, lightweight woven fabric, specially designed for sun protection. It is rated at UPF 50 (blocking 98% of UVB rays), making it an excellent option for any outdoor use.

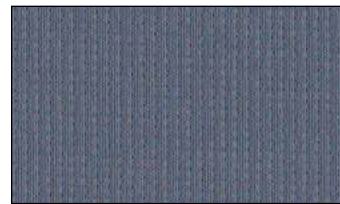
## COLOR OPTIONS



BLACK / 04001



CHARCOAL / 09001



METAL / 09013



STEEL / 09015



WHITE / 01001



CRIMSON / 02008



RED / 02002



FUCHSIA / 02011



PINK / 21001



TEXAS ORANGE / 08011



ORANGE / 08004



STONE / 13001

# UV LITE 2 OF 2



MATERIAL NO: UV

100% Polyester

Subtly textured, lightweight woven fabric, specially designed for sun protection. It is rated at UPF 50 (blocking 98% of UVB rays), making it an excellent option for any outdoor use.

## COLOR OPTIONS



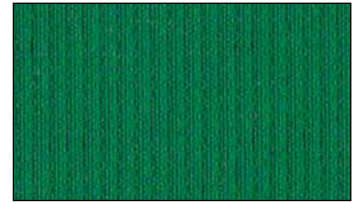
**KHAKI / 13002**



**OLIVE / 06004**



**FOREST / 06026**



**GREEN / 06025**



**AVOCADO / 06001**



**LIME / 06005**



**SEAFOAM / 06015**



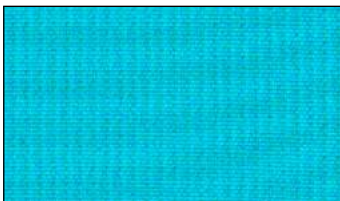
**NAVY / 07003**



**ROYAL / 05020**



**SLATE / 05043**



**AQUA / 05039**



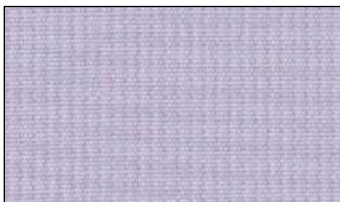
**CAROLINA / 05005**



**FROST / 05001**



**PURPLE / 15004**



**LILAC / 15009**

# PERFORATED UV LITE

1 OF 2



MATERIAL NO: UVP

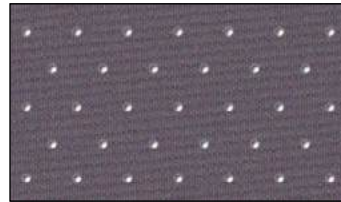
100% Polyester

Perforated UV Lite adds increased breathability to our UV Lite woven fabric, specially designed for sun protection. It is rated at UPF 50 (blocking 98% of UVB rays), making it an excellent option for any outdoor use.

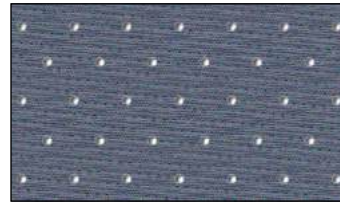
## COLOR OPTIONS



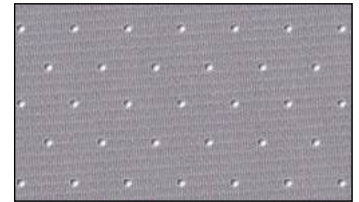
BLACK / 04001



CHARCOAL / 09001



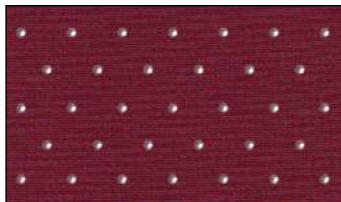
METAL / 09013



STEEL / 09015



WHITE / 01001



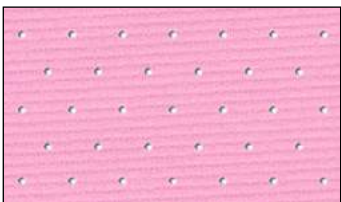
CRIMSON / 02008



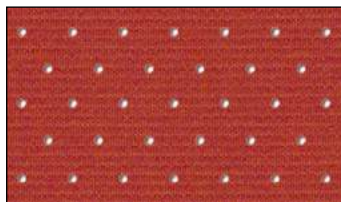
RED / 02002



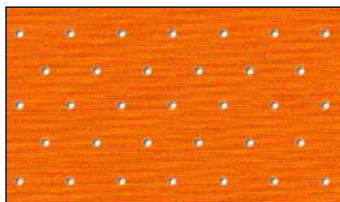
FUCHSIA / 02011



PINK / 21001



TEXAS ORANGE / 08011



ORANGE / 08004



STONE / 13001



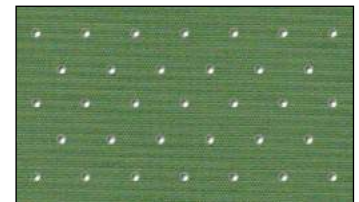
KHAKI / 13002



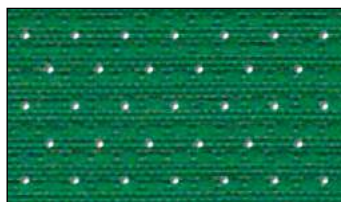
OLIVE / 06004



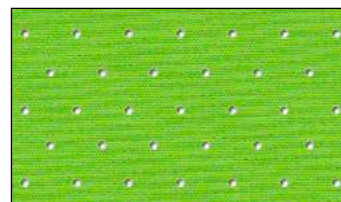
FOREST / 06026



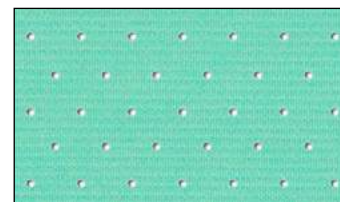
AVOCADO / 06001



GREEN / 06025



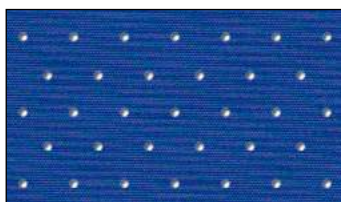
LIME / 06005



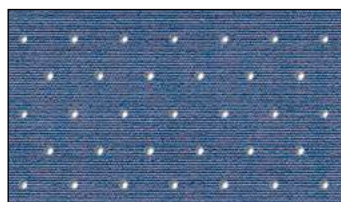
SEAFOAM / 06015



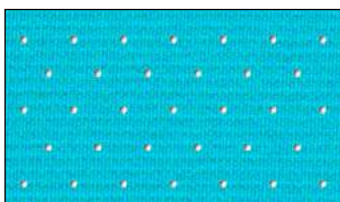
NAVY / 07003



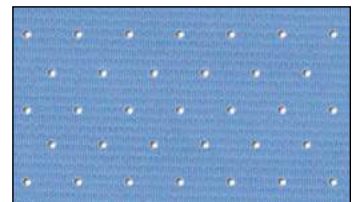
ROYAL / 05020



SLATE / 05043



AQUA / 05039



CAROLINA / 05005

# PERFORATED UV LITE

2 OF 2

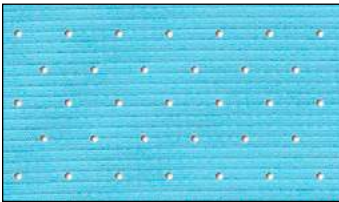


MATERIAL NO: UVP

100% Polyester

Perforated UV Lite adds increased breathability to our UV Lite woven fabric, specially designed for sun protection. It is rated at UPF 50 (blocking 98% of UVB rays), making it an excellent option for any outdoor use.

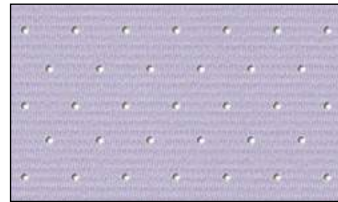
## COLOR OPTIONS



FROST / 05001



PURPLE / 15004



LILAC / 15009

# VENTTECH



MATERIAL NO: VT

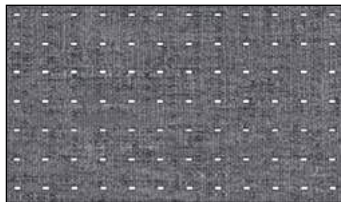
100% Polyester

This stylish, high-performance fabric is woven for functionality with an engineered vent pattern that provides superior breathability and features a UPF 30 rating for sun protection, and a flexible 4-way stretch fabric with enhanced durability making it suitable for any indoor or outdoor use.

## COLOR OPTIONS



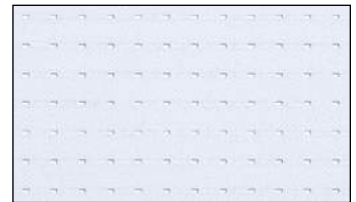
BLACK / 04001



CHARCOAL / 09002



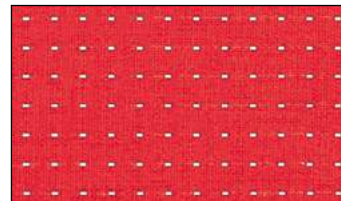
STEEL / 09008



WHITE / 01001



CRIMSON / 02007



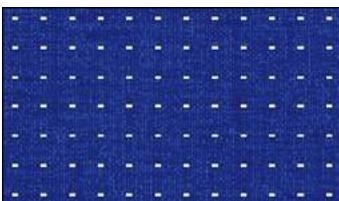
RED / 02002



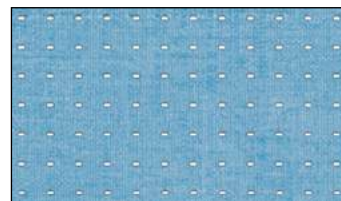
STONE / 12001



TWILIGHT / 07001



ROYAL / 05004



CAROLINA / 05025

# ECOWEAVE



MATERIAL NO: EW

100% Recycled Polyester

EcoWeave is an environmentally conscious alternative to traditional fabrics with a moisture wicking property that keeps you cool and dry whether out in the sun or in the shade. Embrace a brighter and greener future while staying stylish.

## COLOR OPTIONS



BLACK / 04001



CITYSCAPE / 09030



ANTIQUE WHITE / 01001



CRIMSON / 02017



DRIED ROSE / 23



STONE / 25



OREGANO / 06001



TWILIGHT / 07001

# HEMP



MATERIAL NO: HP

100% Hemp

This renewable and biodegradable fabric is an eco-friendly alternative to our standard fabrics. Choosing Hemp helps contribute to the promotion of sustainable headwear and supports environmentally conscious practices in the industry.

## COLOR OPTIONS



BLACK / 30



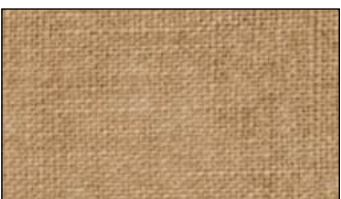
ALUMINUM / 32



LAVA / 23



NATURAL / 34



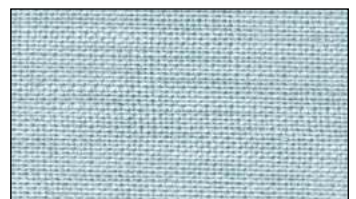
TAUPE / 29



ELM / 19



TWILIGHT / 28



MIST / 17

# ORGANIC CANVAS

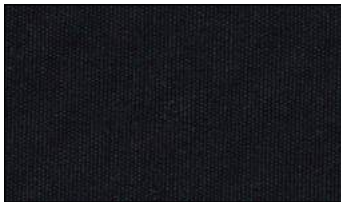


MATERIAL NO: OC

100% Organic Cotton

Durable woven fabric with a soft hand feel. The perfect Eco-Friendly option for those who want a unique natural look and casual style.

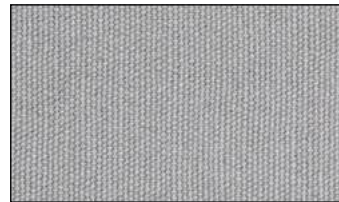
## COLOR OPTIONS



BLACK / 04001



CHARCOAL / 09004



STEEL / 09009



WHITE / 01003



BOYSENBERRY / 03002



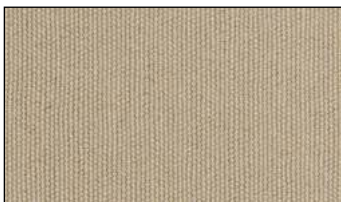
BLOSSOM / 21004



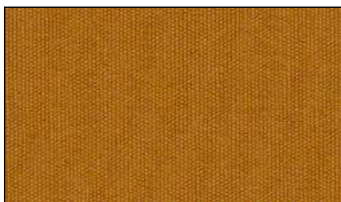
NATURAL / 22001



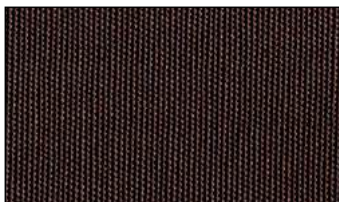
BIRCH / 13002



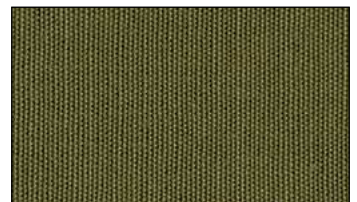
KHAKI / 11007



ACORN / 12003



BROWN / 11001



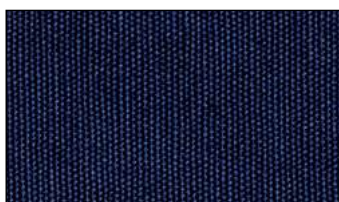
OLIVE / 06007



MINERAL BLUE / 05008



QUARRY / 05015



NAVY / 05014



DUSK / 07003



CAROLINA / 05012

# RECYCLED DIAMOND LITE



MATERIAL NO: DL

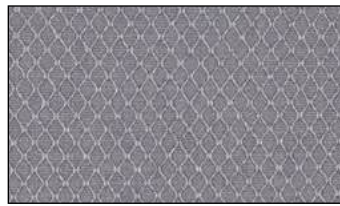
100% Recycled Polyester

Featuring a striking woven diamond pattern, this lightweight yet durable fabric offers UPF 50 sun protection, making it a smart, eco-friendly alternative to traditional materials. Available in a versatile palette of a dozen colors, Recycled Diamond Lite is ideal for creating a standout, environmentally conscious collection.

## COLOR OPTIONS



BLACK / 04001



CITYSCAPE / 09001



WHITE / 01001

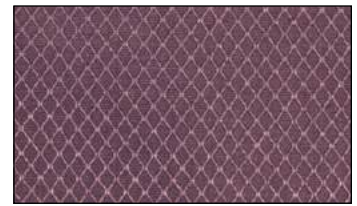
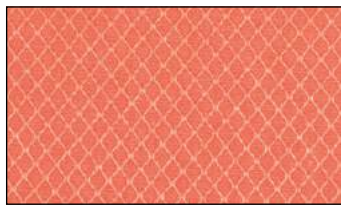
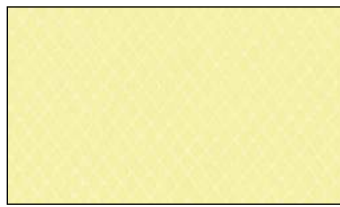


FIG / 11003



MANGO / 02002



CUSTARD / 12006



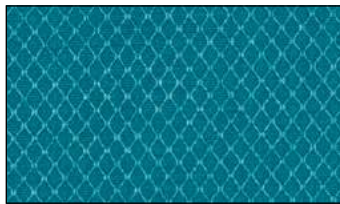
OLIVE / 06013



OCEAN MIST / 09004



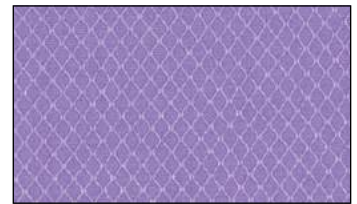
ROBIN EGG / 06017



PEACOCK / 06019



TWILIGHT / 001



ASTER / 15003

# RECYCLED TRUCKER MESH

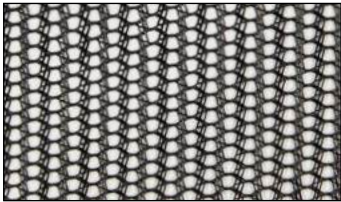


MATERIAL NO: RM

100% Recycled Polyester

Our Recycled Trucker Mesh made from 100% Recycled Polyester is an Eco-Friendly fabric made from post-consumer plastics such as bottles and textile waste, helps reduce the amount of plastic headed for a landfill.

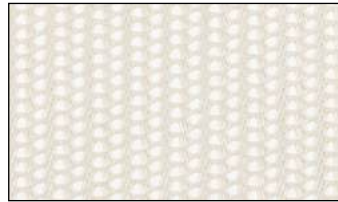
## COLOR OPTIONS



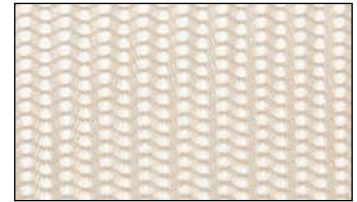
BLACK / 003



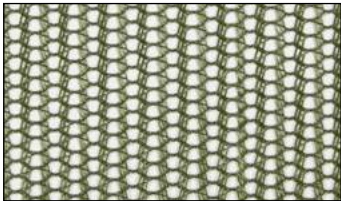
STEEL / 09011



ANTIQUÉ WHITE / 01001



BIRCH / 13007



OLIVE / 06020

# ACRYLIC WOOL 1 OF 2

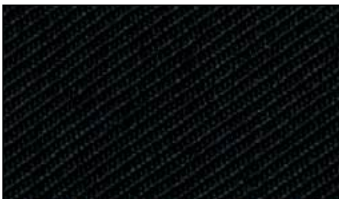


MATERIAL NO: AW

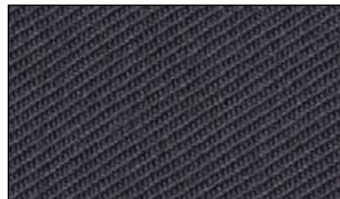
70% Acrylic / 30% Wool

Durable twill weave fabric with a semi coarse hand feel that is indicative of many wool blend fabrics. Recognizable by the slightly more pronounced diagonal texture of the weave that appears on the face of this fabric.

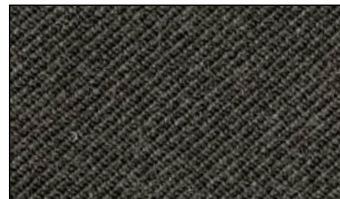
## COLOR OPTIONS



BLACK / 28



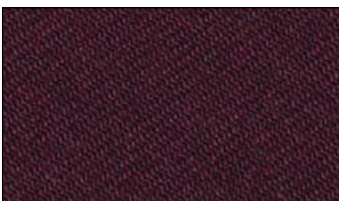
CHARCOAL / 30



DARK GREY HEATHER / 9010



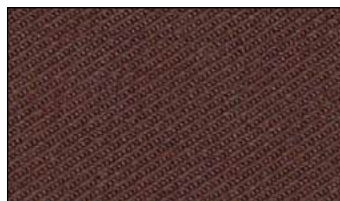
GREY HEATHER / 9005



MAROON / 21



MARIGOLD / 69



BROWN / 23



OLIVE / 63

# ACRYLIC WOOL 2 OF 2



MATERIAL NO: AW

70% Acrylic / 30% Wool

Durable twill weave fabric with a semi coarse hand feel that is indicative of many wool blend fabrics. Recognizable by the slightly more pronounced diagonal texture of the weave that appears on the face of this fabric.

## COLOR OPTIONS



FOREST / 24



NAVY / 22

# HERITAGE FLANNEL

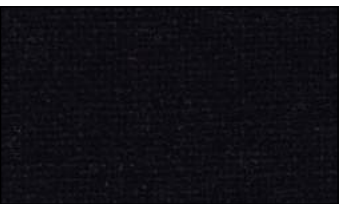


MATERIAL NO: HF

50% Wool / 50% Polyester

Polyester medium-weight, soft wool blend flannel fabric that has a brushed or fuzzy finish. Perfect for a vintage or outdoorsy vibe.

## COLOR OPTIONS



BLACK / 2



DARK GREY HEATHER / 23



GREY HEATHER / 341



MOSS / 20



NAVY / 113

# JERSEY FLEECE



MATERIAL NO: JF

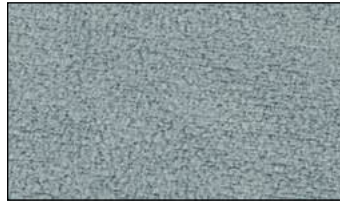
100% Polyester

This soft and warm fabric is super comfortable and the perfect choice for when cold weather arrives.

## COLOR OPTIONS



BLACK / 2



STEEL / 3511



WHITE / 006

# STRETCH WOOL

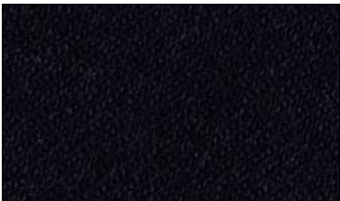


MATERIAL NO: SW

88% Acrylic / 10% Wool / 2% Spandex

Durable twill weave fabric specially designed to stretch for all-day comfort. Recognizable by its semi coarse hand feel and slightly more pronounced diagonal texture of the weave. Great for flexible sizing options and performance.

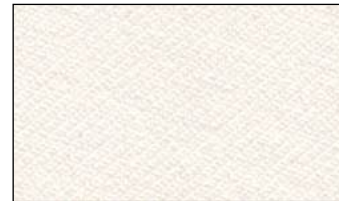
## COLOR OPTIONS



BLACK / 208



STEEL / 86



WHITE / 36



NAVY / 213

# ALOHA



MATERIAL NO: S

100% Cotton

Our new Aloha Specialty Fabric instantly transports you to the islands with the arrangement of tropical foliage that creates a sense of harmony and natural beauty.

## COLOR OPTIONS



BLACK ALOHA / 2581



WHITE ALOHA / 2579



TWILIGHT ALOHA / 2580

# CORDUROY

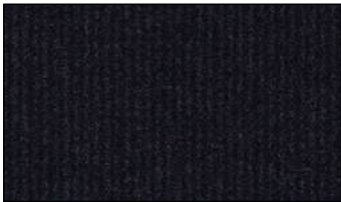


MATERIAL NO: S

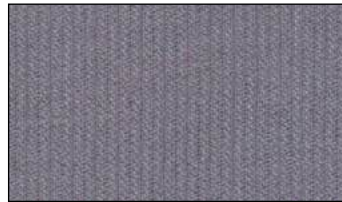
100% Cotton

21-wale cord brings a rustically refined, heritage-inspired twist to any piece of headwear you can think up.

## COLOR OPTIONS



BLACK / 1



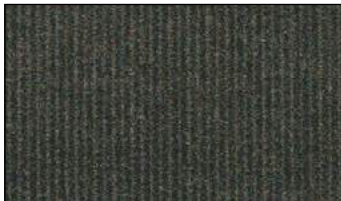
GREY / 9



WHITE / 8



CAMEL / 2



DARK OLIVE / 40



NAVY / 35

# CORK



MATERIAL NO: S

100% Polyester

Add our Cork fabric to most of our silhouettes or highlight the Front Panels, Button, Visor and Undervisor. Call attention to your logo by embroidering it on a Cork applique secured to the front panel in a variety of different stitch options.

## COLOR OPTIONS



CORK / 68L

# CROSS WALE CORDUROY

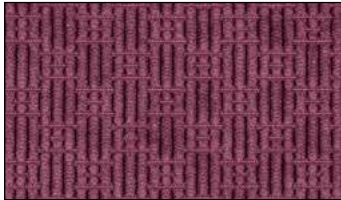


MATERIAL NO: S

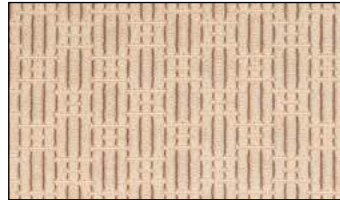
90% Polyester 10% Nylon

Crafted from a durable poly-nylon blend, this fabric features raised vertical wales intersected by a distinctive stitch pattern, adding depth and character.

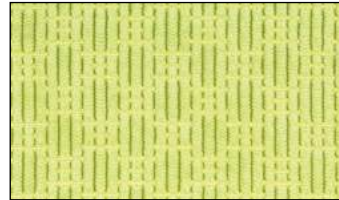
## COLOR OPTIONS



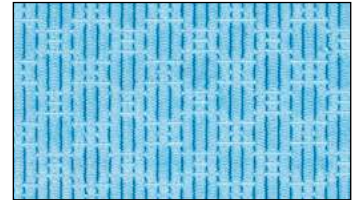
MULBERRY / 4403



BISCOTTI / 4402



PISTACHIO / 4404



ICEBERG / 4401

# DENIM



MATERIAL NO: S

Sturdy midweight twill weave fabric. Protip: wash it for a retro jean look.

## COLOR OPTIONS



INDIGO / 206

85% Polyester / 15% Cotton



MEDIUM / 1753

100% Cotton



LIGHT / 1752

100% Cotton

# DENIM DOBBY



MATERIAL NO: S

100% Cotton

This midweight fabric with a slub texture and contrast dobby pattern makes it unique, versatile and suitable for everyday wear.

## COLOR OPTIONS



DARK DENIM DOBBY / 2692



LIGHT DENIM DOBBY / 2691

# FLANNEL



MATERIAL NO: S

100% Polyester

This classic patterned flannel offers warmth and comfort that showcases bold geometric shapes and vibrant colors, reflecting the rich cultural heritage and desert landscapes of the frontier.

## COLOR OPTIONS



SOUTHERN FRONTIER  
FLANNEL / 3437



NORTHERN FRONTIER  
FLANNEL / 3438



WESTERN FRONTIER  
FLANNEL / 3439

# HAWAIIIAN



MATERIAL NO: S

80% Cotton / 20% Polyester

Printed canvas features a playful & vacation-ready motif of vintage-inspired hibiscus, pineapples, and palm leaves. Stand out in the best way possible.

## COLOR OPTIONS



BLACK / 205

# HORSETAIL



MATERIAL NO: S

100% Cotton

Our new Horsetail Specialty Fabric is a botanically inspired design where color juxtaposition plays a significant role in bringing to life the vibrancy of the pattern.

## COLOR OPTIONS



BLACK HORSETAIL / 2582



WHITE HORSETAIL / 2588

# LEOPARD

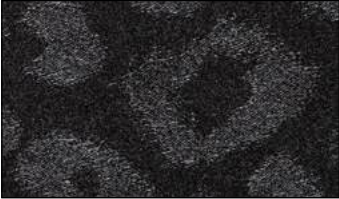


MATERIAL NO: S

100% Polyester

This textile integrates a classic animal print pattern in a tonal metallic color palette.

## COLOR OPTIONS



BLACK LEOPARD / 28



WHITE LEOPARD / 33



ROSEWOOD LEOPARD / 23

# PLUMERIA



MATERIAL NO: S

90% Polyester / 10% Spandex

Pairing trendy, colorful, eye-catching patterns with the technical properties of our popular TriTech fabric, Plumeria combines fashion with performance, making it the perfect exotic look for vacations, beach days, sports or anywhere fun is required.

## COLOR OPTIONS



BLACK PLUMERIA / PLM1



WHITE PLUMERIA / PLM2



RED PLUMERIA / PLM3



FUCHSIA PLUMERIA / PLM5



PAPAYA PLUMERIA / PLM6



STONE PLUMERIA / PLM7



TWILIGHT PLUMERIA / PLM4

# SUEDE



MATERIAL NO: S

100% Polyester

Animal-friendly faux suede has a luxurious realistic napped finish that is soft to the touch, stylish, and long-lasting, a perfect option to elevate any design.

## COLOR OPTIONS



BLACK / 4



TOBACCO / 56



BROWN / 107

# TIE-DYE



MATERIAL NO: S

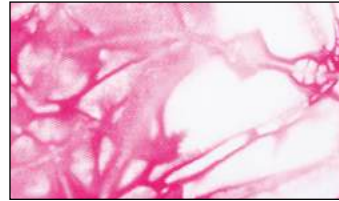
100% Cotton

Inspired by our popular Fillmore Knit, this durable woven fabric has a soft hand feel and can be identified by the diagonal texture of its weave and unique dye pattern.

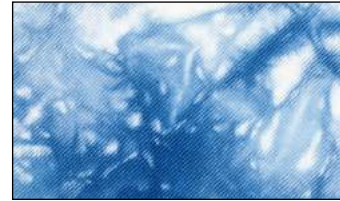
## COLOR OPTIONS



STORMY NIGHT / TD1



BRIGHT BERRY / TD2



SUMMER SKY / TD3



BLUE MOON / TD4



COTTON CANDY / TD5

# WAXED CANVAS

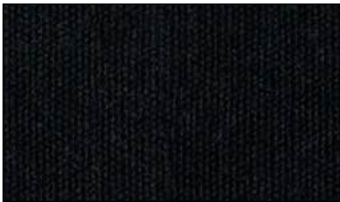


MATERIAL NO: S

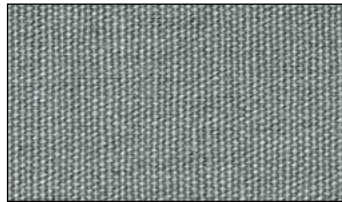
100% Cotton Canvas

This durable, lightly waxed, 100% cotton canvas fabric has a classic shine-free finish that looks great and adds an extra layer of weather resistance to your headwear.

## COLOR OPTIONS



JET BLACK / 04017



PIGEON / 09012



MAROON / 03004



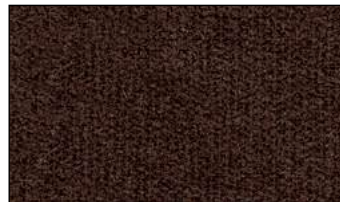
RUST / 08003



MUSLIN / 13003



BROWN SUGAR / 11012



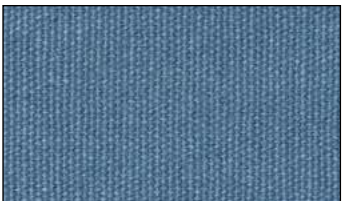
BRACKEN / 11013



CAPULET OLIVE / 06011



INSIGNIA BLUE / 07008



NIAGARA / 05004

# WIDE WALE CORDUROY

1 OF 2

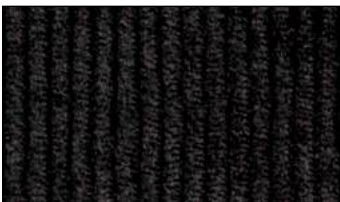


MATERIAL NO: S

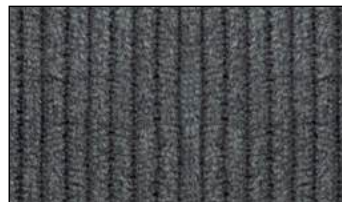
100% Cotton

8-wale cord kicks the vintage feel up a notch, bringing a heritage-inspired twist to any piece of headwear you can think up.

## COLOR OPTIONS



BLACK / 029



CHARCOAL / 071



MAROON / 047



DUSTY ROSE / 049

# WIDE WALE CORDUROY 2 OF 2

MATERIAL NO: S

100% Cotton

8-wale cord kicks the vintage feel up a notch, bringing a heritage-inspired twist to any piece of headwear you can think up.

## COLOR OPTIONS



BONE / 072



KHAKI / 038



BRONZE / 042



ESPRESSO / 032



EMERALD / 043



AGAVE / 045



TWILIGHT / 062



CADET / 039

# ACRYLIC YARN 1 OF 3

MATERIAL NO: K

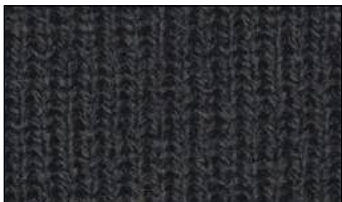
100% Acrylic

Standard weight yarn that can be used in various knit silhouettes and patterns. We've sourced our yarns from leading mills so that we can offer you a soft, high-quality yarn that is sure to help keep you warm on a cold day.

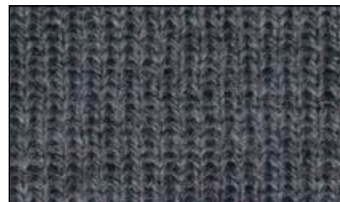
## COLOR OPTIONS



BLACK / 36



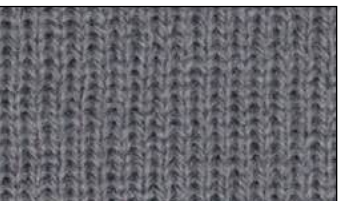
CHARCOAL / 15



CHARCOAL HEATHER / 143



METAL / 14



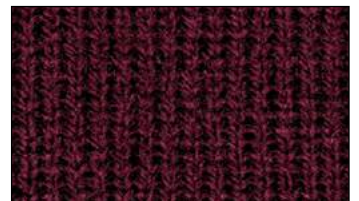
STEEL / 13



STEEL HEATHER / 218



WHITE / 1



MAROON / 155

# ACRYLIC YARN 2 OF 3

MATERIAL NO: K

100% Acrylic

Standard weight yarn that can be used in various knit silhouettes and patterns. We've sourced our yarns from leading mills so that we can offer you a soft, high-quality yarn that is sure to help keep you warm on a cold day.

## COLOR OPTIONS



CRIMSON / 129



SCARLET / 163



BOYSENBERRY / 068



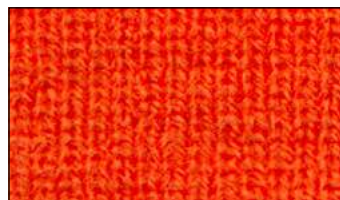
FUCHSIA / 279



PINK / 188



TEXAS ORANGE / 546



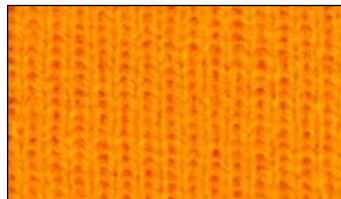
ORANGE / 207



NUGGET / 240



GOLD / 182



ATHLETIC GOLD / 80



STONE / 224



KHAKI / 5



LATTE / 1094



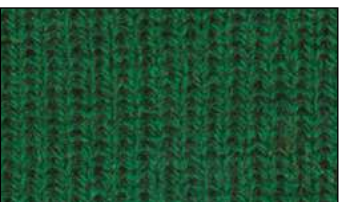
BROWN / 10



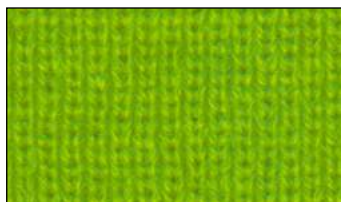
OLIVE / 52



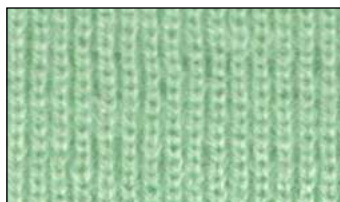
FOREST / 126



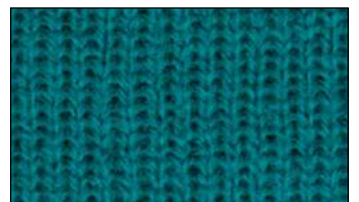
GREEN / 49



LIME / 506



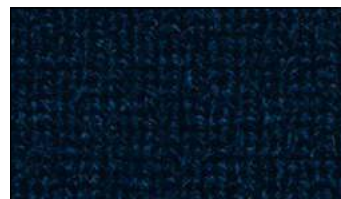
PALE MINT / 039



TEAL / 383



MINERAL BLUE / 1079



NAVY / 34



TWILIGHT / 206



ROYAL / 121

# ACRYLIC YARN 3 OF 3

MATERIAL NO: K

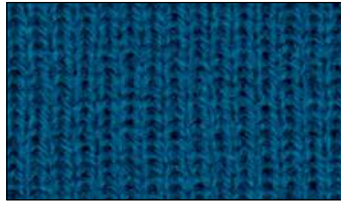
100% Acrylic

Standard weight yarn that can be used in various knit silhouettes and patterns. We've sourced our yarns from leading mills so that we can offer you a soft, high-quality yarn that is sure to help keep you warm on a cold day.

## COLOR OPTIONS



SLATE / 30



ELECTRIC BLUE / 421



CAROLINA / 249



FROST / 524



PURPLE / 131

# HEATHER YARN 1 OF 2

MATERIAL NO: H

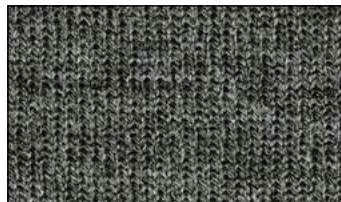
70% Acrylic / 30% Polyester

Standard weight yarn that can be used in various silhouettes, knits, and patterns. We've sourced our yarns from leading mills so that we can offer you a soft, high-quality yarn that is sure to help keep you warm on a cold day.

## COLOR OPTIONS



BLACK / 09051



CHARCOAL / 09028



CRIMSON / 03018



CREAM / 12048



LATTE / 13020



ACORN / 12050



BROWN / 11017



FOREST / 10041

# HEATHER YARN 2 OF 2

MATERIAL NO: H

70% Acrylic / 30% Polyester

Standard weight yarn that can be used in various silhouettes, knits, and patterns. We've sourced our yarns from leading mills so that we can offer you a soft, high-quality yarn that is sure to help keep you warm on a cold day.

## COLOR OPTIONS



TWILIGHT / 05022



SLATE / 05078



PLUM / 15069

# COTTON YARN

MATERIAL NO: CK

100% Cotton

A 100% cotton yarn, with cotton considered the king of the natural fibers, it is among the softest, smoothest and most comfortable yarns available. It will break in nicely and hold a longer life than acrylic.

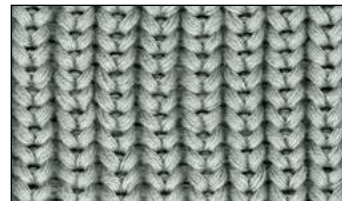
## COLOR OPTIONS



BLACK / 132



CHARCOAL / 288



STEEL / 429



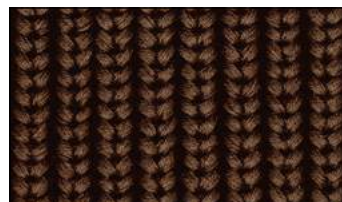
WHITE / 004



MAROON / 142



TEXAS ORANGE / 441



BROWN / 153



OLIVE / 397



FOREST / 268



NAVY / 392

# RECYCLED YARN

MATERIAL NO: RY

100% Recycled Polyester

Featuring yarns made from post-consumer plastics such as bottles and textile waste which helps reduce the amount of plastic headed for a landfill. The ultra-soft yarn is comfortable and perfect for everyday wear in colder weather.

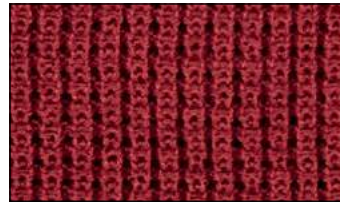
## COLOR OPTIONS



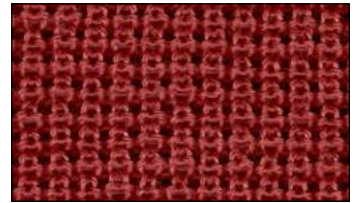
BLACK / 646



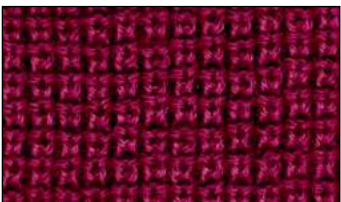
CHARCOAL / 1012



CRIMSON / 454



SPANISH RED / 590



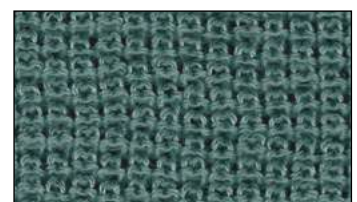
BOYSENBERRY / 625



ACORN / 586



OLIVE / 718



MINERAL BLUE / 565



CAROLINA / 566

# TIE-DYE YARN 1 OF 2

MATERIAL NO: CK

100% Cotton

This soft, natural yarn features a truly one-of-a-kind custom hand tie-dye process, making the pattern and coloration of each piece totally unique.

## COLOR OPTIONS



STORMY NIGHT / TD1



BRIGHT BERRY / TD2



SUMMER SKY / TD3



BLUE MOON / TD4

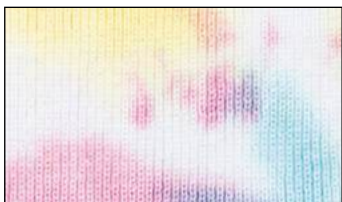
# TIE-DYE YARN 2 OF 2

MATERIAL NO: CK

100% Cotton

This soft, natural yarn features a truly one-of-a-kind custom hand tie-dye process, making the pattern and coloration of each piece totally unique.

## COLOR OPTIONS



COTTON CANDY / TD5

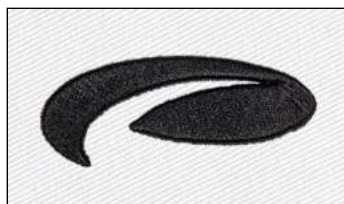
# STANDARD THREAD 1 OF 4

MATERIAL NO: COATS / MING SHYANG

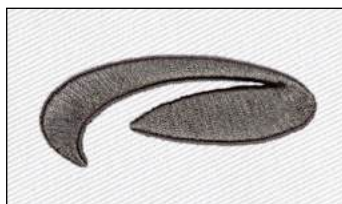
Our Standard Polyester Embroidery Threads are sourced from leading mills, chosen for their high-quality silk-like luster, smooth feel, and exceptional strength suitable for use on various custom appliques and designs to show off your brand.

*These colors are also available in Dull Thread with a flat finish if requested. Please note Dull Thread is a different thread option and color shifting may occur.*

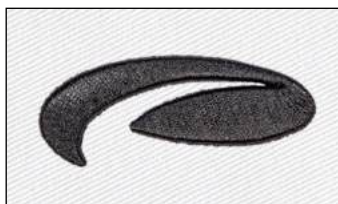
## COLOR OPTIONS



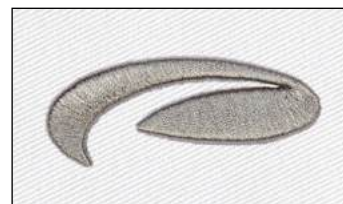
BLACK



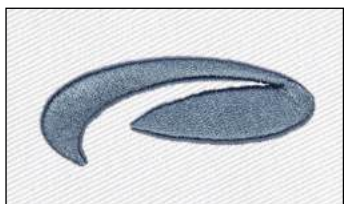
CHARCOAL



DARK GREY HEATHER



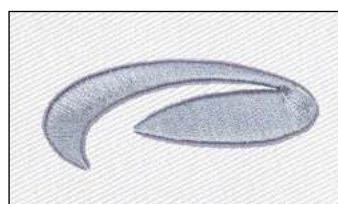
GREY HEATHER



METAL



STEEL



STEEL OXFORD



WHITE



ANTIQUÉ WHITE



MAROON



CRIMSON



SCARLET

# STANDARD THREAD 2 OF 4

MATERIAL NO: COATS / MING SHYANG

Our Standard Polyester Embroidery Threads are sourced from leading mills, chosen for their high-quality silk-like luster, smooth feel, and exceptional strength suitable for use on various custom appliques and designs to show off your brand.

*These colors are also available in Dull Thread with a flat finish if requested. Please note Dull Thread is a different thread option and color shifting may occur.*

## COLOR OPTIONS



RED



SPANISH RED



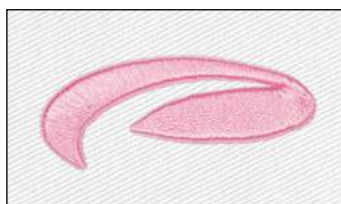
NANTUCKET RED



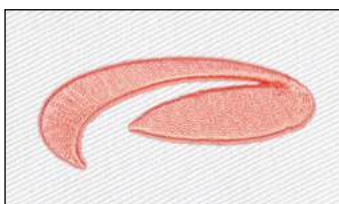
BOYSENBERRY



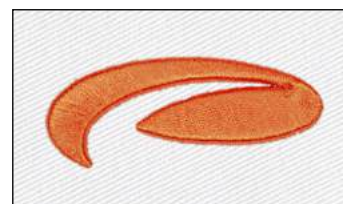
FUCHSIA



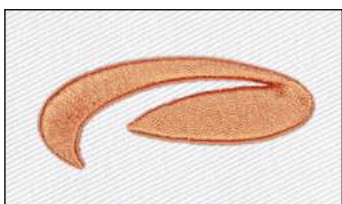
PINK



MANGO



RUST



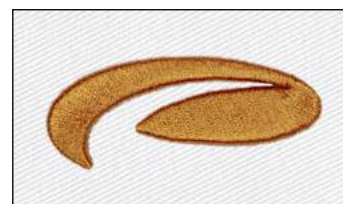
TEXAS ORANGE



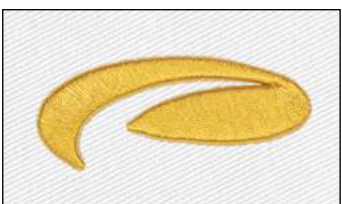
ORANGE



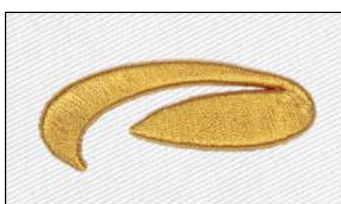
NUGGET



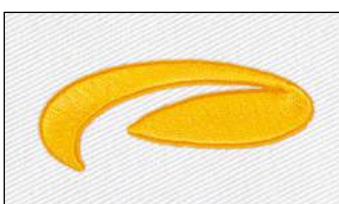
MARIGOLD



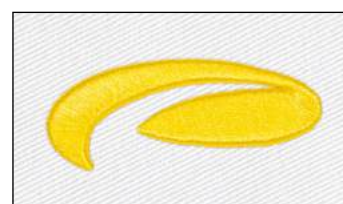
MUSTARD



GOLD



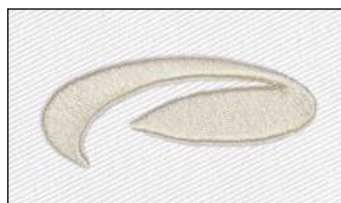
ATHLETIC GOLD



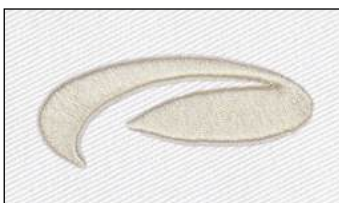
YELLOW



CREAM



BIRCH



STONE



KHAKI

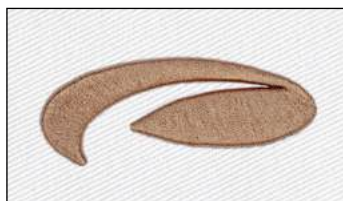
# STANDARD THREAD 3 OF 4

MATERIAL NO: COATS / MING SHYANG

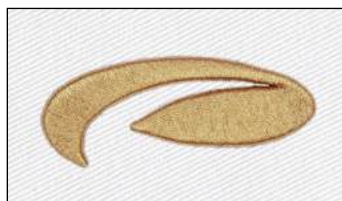
Our Standard Polyester Embroidery Threads are sourced from leading mills, chosen for their high-quality silk-like luster, smooth feel, and exceptional strength suitable for use on various custom appliques and designs to show off your brand.

*These colors are also available in Dull Thread with a flat finish if requested. Please note Dull Thread is a different thread option and color shifting may occur.*

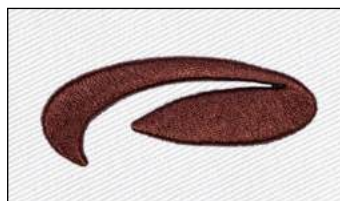
## COLOR OPTIONS



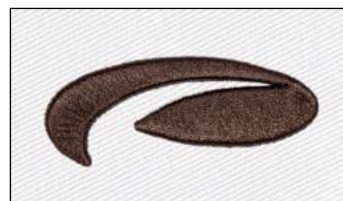
LATTE



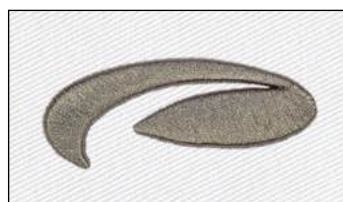
ACORN



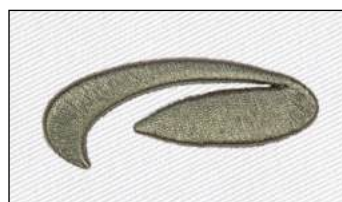
CINNAMON



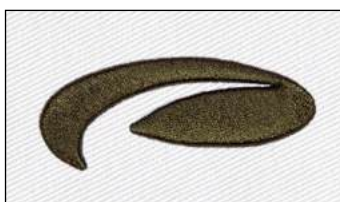
BROWN



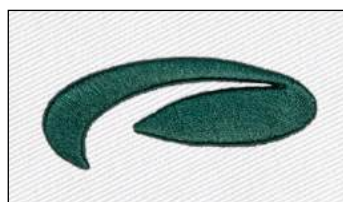
SURPLUS



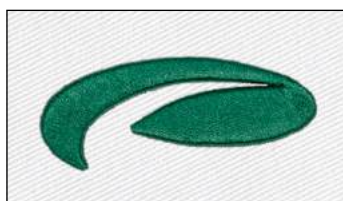
OLIVE



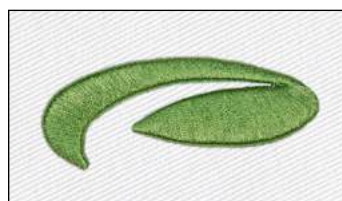
MOSS



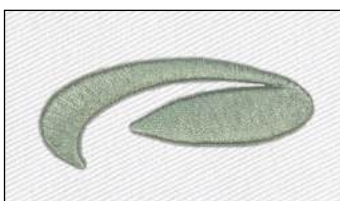
FOREST



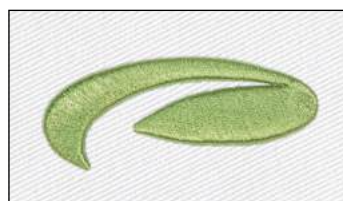
GREEN



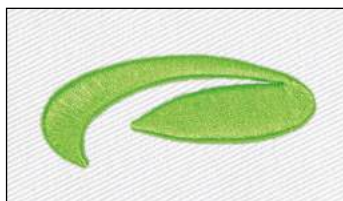
AVOCADO



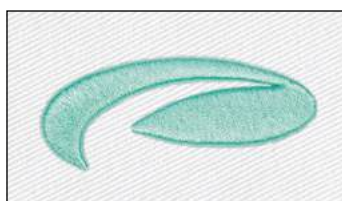
SAGE



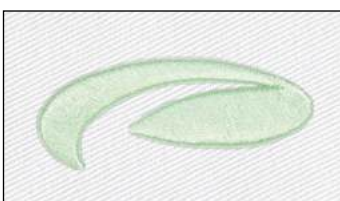
KIWI



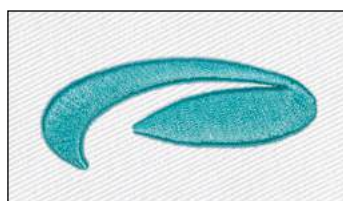
LIME



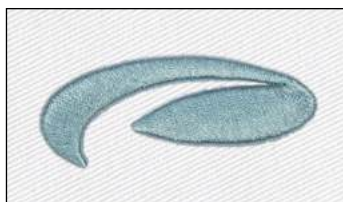
SEAFOAM



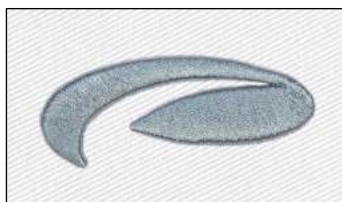
PALE MINT



TEAL



MINERAL BLUE



QUARRY



NAVY



TWILIGHT

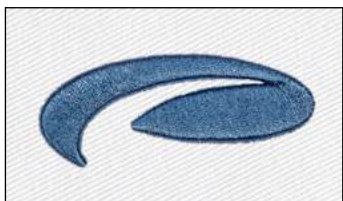
# STANDARD THREAD 4 OF 4

MATERIAL NO: COATS / MING SHYANG

Our Standard Polyester Embroidery Threads are sourced from leading mills, chosen for their high-quality silk-like luster, smooth feel, and exceptional strength suitable for use on various custom appliques and designs to show off your brand.

*These colors are also available in Dull Thread with a flat finish if requested. Please note Dull Thread is a different thread option and color shifting may occur.*

## COLOR OPTIONS



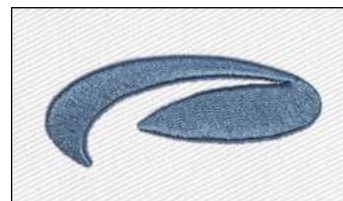
COBALT



ROYAL



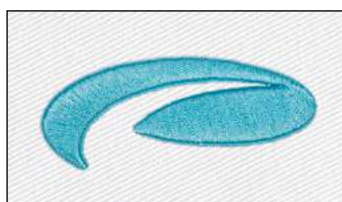
DUSK



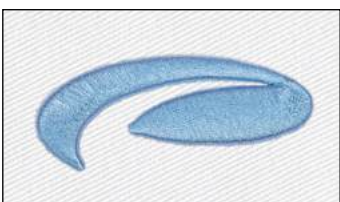
SLATE



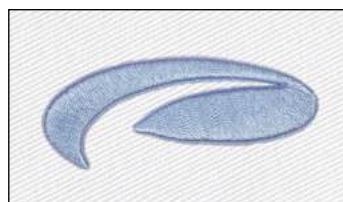
ELECTRIC BLUE



AQUA



CAROLINA



CAROLINA OXFORD



FROST



PLUM



PURPLE



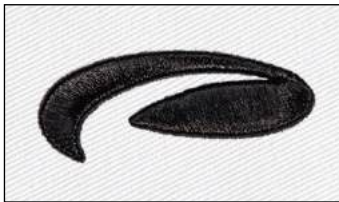
LILAC

# METALLIC THREAD

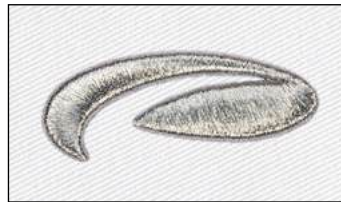
MATERIAL NO: MC

Our Metallic Thread has a glossy metallic finish and can be used on various appliques and designs to customize your headwear to fit your look. We've sourced our thread from leading mills so that we can offer you a strong, high-quality yarn to show off your brand.

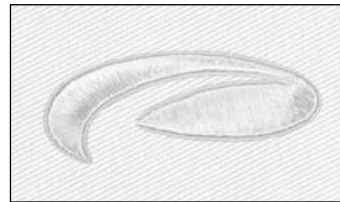
## COLOR OPTIONS



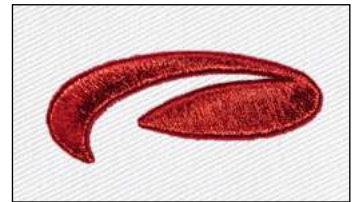
BLACK



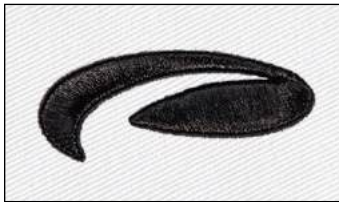
SILVER



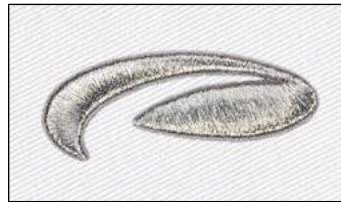
WHITE



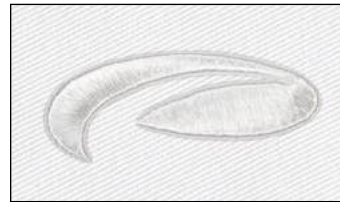
SCARLET



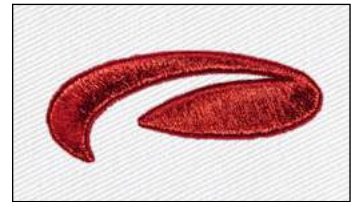
BLACK



SILVER



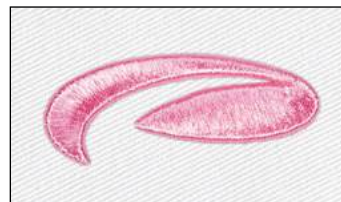
WHITE



SCARLET



FUCHSIA



PINK



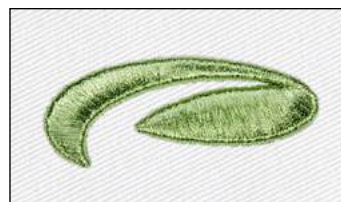
GOLD



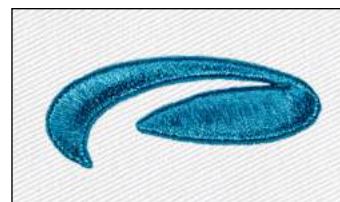
BROWN



GREEN



KIWI



ELECTRIC BLUE



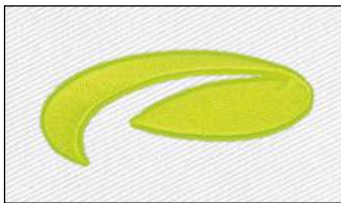
PURPLE

# NEON THREAD

MATERIAL NO: COATS

Our Neon Thread has a satin finish and can be used on various appliques and designs to customize your headwear to fit your look. We've sourced our thread from leading mills so that we can offer you a strong, high-quality yarn to show off your brand.

## COLOR OPTIONS



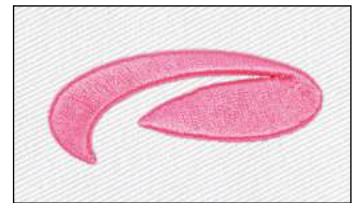
YELLOW



GREEN



ORANGE



PINK



BLUE

# PLASTIC SNAP 1 OF 3

MATERIAL NO: BKJ

The Plastic Snap closure is a rugged, time tested design that delivers classic style. Choose from over 30 colors to finish off your headwear design and make it truly your own.

## COLOR OPTIONS



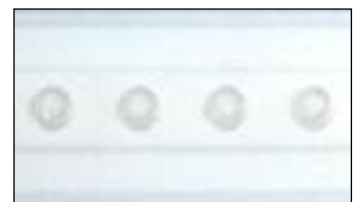
BLACK



CHARCOAL



STEEL



WHITE



MAROON



CRIMSON



SCARLET



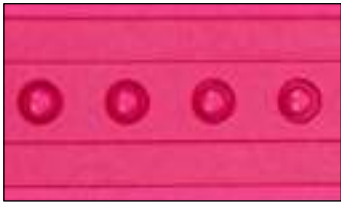
RED

# PLASTIC SNAP 2 OF 3

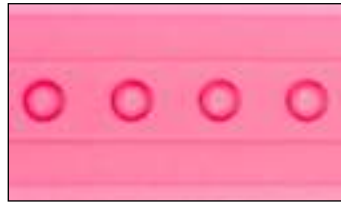
MATERIAL NO: BKJ

The Plastic Snap closure is a rugged, time tested design that delivers classic style. Choose from over 30 colors to finish off your headwear design and make it truly your own.

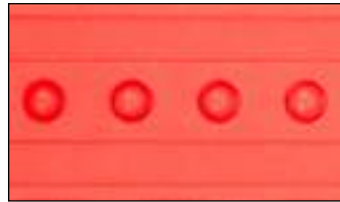
## COLOR OPTIONS



FUCHSIA



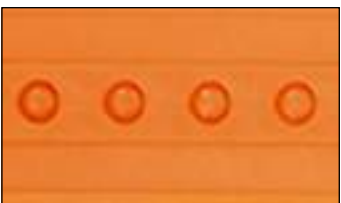
PINK



MANGO



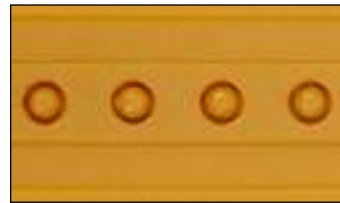
TEXAS ORANGE



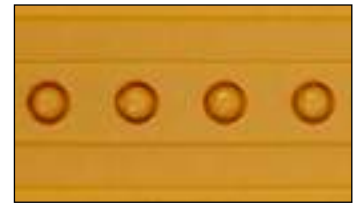
ORANGE



TENNESSEE



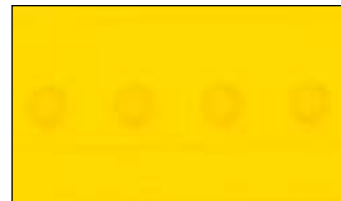
MUSTARD



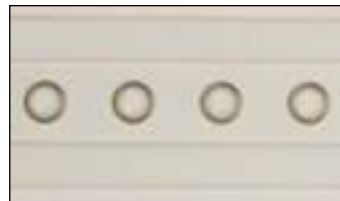
GOLD



ATHLETIC GOLD



YELLOW



STONE



KHAKI



LATTE



BROWN



OLIVE



FOREST



GREEN



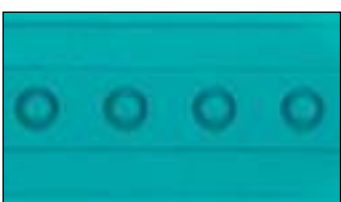
SAGE



LIME



SEAFOAM



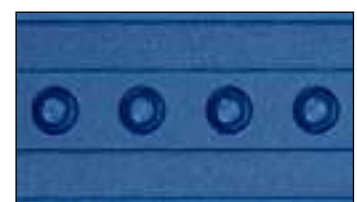
TEAL



NAVY



TWILIGHT



ROYAL

# PLASTIC SNAP 3 OF 3

MATERIAL NO: BKJ

The Plastic Snap closure is a rugged, time tested design that delivers classic style. Choose from one over 30 colors to finish off your headwear design and make it truly your own.

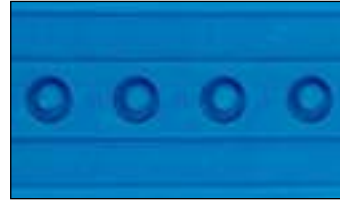
## COLOR OPTIONS



DUSK



SLATE



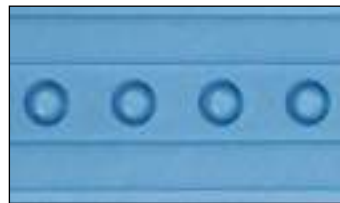
ELECTRIC BLUE



NEON BLUE



AQUA



CAROLINA



PURPLE

# RECYCLED PLASTIC SNAP

MATERIAL NO: BKJ-RE

Our mission of offering more options in the Eco-Friendly product category continues with the addition of a Recycled Plastic Snap. A small detail such as a closure can add up and have an impact on reducing post-consumer plastics such as bottles and textile waste in landfills just like our fabrics.

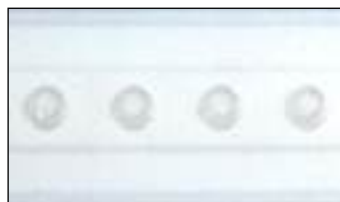
## COLOR OPTIONS



BLACK



CHARCOAL



WHITE



NAVY

# TRUCKER ROPE

A classic fine braided rope that accents the base of a visor.

## COLOR OPTIONS



BLACK



STEEL



WHITE



RED



FUCHSIA



PINK



TEXAS ORANGE



TENNESSEE



ATHLETIC GOLD



STONE



KHAKI



OLIVE



GREEN



TEAL



NAVY



ROYAL



AQUA



CAROLINA

# SPECIALTY ROPE 1 OF 2

Unique decorative rope available in repetitive stripe, zig-zag or lattice designs.

## COLOR OPTIONS



BLACK / WHITE POLKA DOT



STEEL / WHITE POLKA DOT



SEAFOAM / WHITE POLKA DOT



WHITE / BLACK LATTICE



PINK / WHITE LATTICE



YELLOW / BLACK LATTICE



NEON ORANGE /  
BLACK LATTICE



GREEN / BLACK LATTICE



GREEN / WHITE LATTICE



NAVY / WHITE LATTICE



FROST / BLACK LATTICE



MOUNTAIN TRAIL



CARNIVAL MULTI-STRIPE



CONFETTI MULTI-STRIPE



FIESTA MULTI-STRIPE



BLACK / CHARCOAL STRIPE



BLACK / WHITE STRIPE



WHITE / BLACK STRIPE



WHITE / TEAL STRIPE



GREEN / WHITE STRIPE



TWILIGHT / WHITE STRIPE



ROYAL / WHITE STRIPE



CAROLINA / WHITE STRIPE



BLACK W/ RED / WHITE /  
ROYAL STRIPE



STEEL W/ BLACK / WHITE STRIPE



WHITE W/ RED / ROYAL STRIPE



TWILIGHT W/ CAROLINA /  
WHITE STRIPE



SCARLET / WHITE ZIG-ZAG

# SPECIALTY ROPE 2 OF 2

Unique decorative rope available in repetitive stripe, zig-zag or lattice designs.

## COLOR OPTIONS



NAVY / WHITE ZIG-ZAG



METALLIC SILVER



METALLIC GOLD

# PREMIUM VISOR CORD

A thick braided rope that adds a fashionable detail to a visor contour.

## COLOR OPTIONS



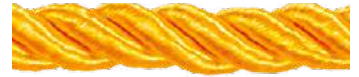
BLACK



WHITE



SCARLET



ATHLETIC GOLD



TWILIGHT

# FELT 1 OF 3

A soft yet durable fiber blend fabric that provides the perfect canvas for your custom applique.

## COLOR OPTIONS



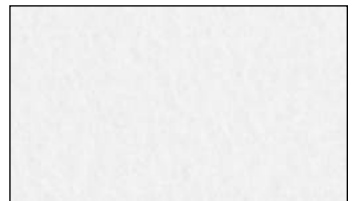
BLACK



CHARCOAL



STEEL



WHITE



CRIMSON



SCARLET



FUCHSIA

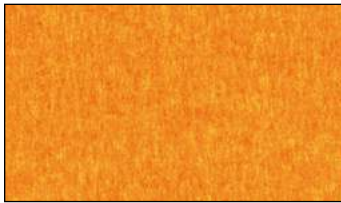


PINK

# FELT 2 OF 3

A soft yet durable fiber blend fabric that provides the perfect canvas for your custom applique.

## COLOR OPTIONS



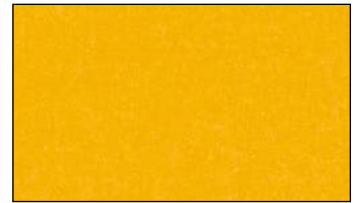
ORANGE



MUSTARD



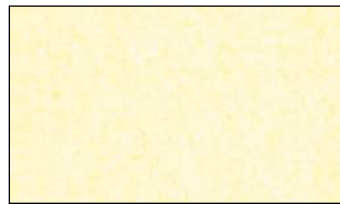
GOLD



ATHLETIC GOLD



YELLOW



CREAM



STONE



KHAKI



LATTE



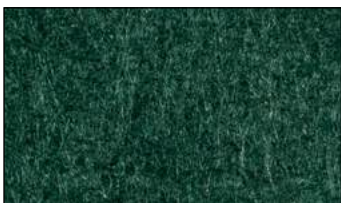
CINNAMON



BROWN



SURPLUS



FOREST



GREEN



AVOCADO



KIWI



LIME



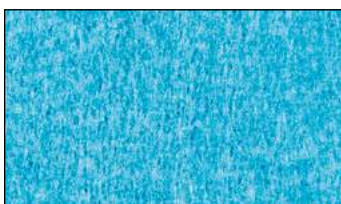
NAVY



ROYAL



SLATE



AQUA



CAROLINA



FROST



PURPLE

# FELT 3 OF 3

A soft yet durable fiber blend fabric that provides the perfect canvas for your custom applique.

## COLOR OPTIONS



LILAC